

# ASTERIA 3

FIXED RECESSED LED DOWNLIGHT



**Asteria 3 - Fixed Recessed downlight.** The Asteria 3 line of recessed light fixtures uses a specialized lens that offers unprecedented glare control without compromising efficiency. Recessed fixtures are a quiet addition to a room's design, disappearing into the ceiling while offering balanced, layered light. The Asteria 3's soft light is perfect for any office space design.

## Ordering Code

|         |            |            |   |   |    |    |
|---------|------------|------------|---|---|----|----|
| Fixture | <b>803</b> |            |   |   |    |    |
|         | 1          | 2          | 3 | 4 | 5  | 6  |
| Driver  |            | <b>803</b> |   |   | -- | -- |
|         | 1          | 2          | 3 | 4 | 5  | 6  |

## Product Specifications

**SAMPLE:** Fixture **803 - A90 - 728 - 27 - 07 - 01** | Driver **910 - 803 - STD - 120 - A90 - 07**

| 1 - Model              | 2 - CRI/LED   | 3 - Reflector  | 4 - CCT  | 5 - Lumen   | 6 - Finish   | 1 - Housing Style                                    |
|------------------------|---|--|--|---|--|--|
| <b>803</b> · Asteria 3 | <b>A90</b> · 93+ CRI Accuracy   | <b>728</b> · 28° domed glass<br><b>748</b> · 48° domed glass | <b>25</b> · 2500K<br><b>27</b> · 2700K<br><b>30</b> · 3000K<br><b>35</b> · 3500K<br><b>40</b> · 4000K<br><b>65</b> · 6500K   | <b>07</b> · 700 (6.1W)<br><b>10</b> · 1000 (9.1W)<br><b>13</b> · 1300 (12.1W)<br><b>20</b> · 2000 (19.8W)<br><b>30</b> · 3000 (29.4W) | <b>01</b> · White<br><b>02</b> · Black<br><b>08</b> · Silver<br><b>XX</b> · Custom | <b>910</b> · Remote<br><b>915</b> · New Construction |
| 2 - Model              | 3 - Driver  | Dim Level  | Dim Level  | 4 - Line Voltage  | 5 - LED  | 6 - Lumen  |
| <b>803</b> · Asteria 3 | <b>STD</b> · Non Dimming<br><b>LCS</b> · 0 - 10 Volt Protocol<br><b>DIM</b> · Phase* <sup>1</sup><br><b>ELDOLC</b> · EldoLED 0 - 10 Volt* <sup>2</sup><br><b>DALI</b> · Dali Protocol* <sup>2</sup> | N/A<br>1%<br>1%<br>0.1%<br>0.1%                              | <b>LUTES</b> · Hilume Ecodigital* <sup>2</sup><br><b>LUT2W</b> · 2 Wire for phase* <sup>1/2</sup><br><b>DMX</b> · SENSO* <sup>2</sup><br><b>EMG</b> · Emergency Driver* <sup>2/4</sup><br><b>CSMB</b> · Casambi Wireless Control* <sup>3/4</sup> | 1%<br>1%  | <b>120</b> · 120V<br><b>277</b> · 277V<br><b>347</b> · 347V* <sup>5</sup>          | Same as Fixture<br>Same as Fixture                   |

\*1 120V only

\*2 Requires **910** - Remote

\*3 Specified separately

\*4 Second driver required

\*5 Not available with ELDO, Lutron or DMX

Project : \_\_\_\_\_  
Quantity : \_\_\_\_\_  
Type : \_\_\_\_\_  
Notes : \_\_\_\_\_  
\_\_\_\_\_

# ASTERIA 3

FIXED RECESSED LED DOWNLIGHT



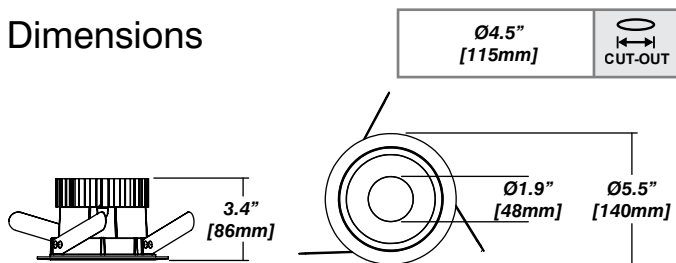
## Installation

- For new and retrofit installations
- Holds in place with three friction fit spring clips
- Simple connection between fixture and driver via quick connect

## Construction / Finish

- Custom finishes are available
- Cast aluminum trim
- Rated for damp location
- Made in Canada

## Dimensions



## Photometrics

Senso's in-house photometric testing ensures that our lighting design can match your needs precisely. Our Goniophotometer and testing lab produces on-demand photometry files based on any specified fixture, including LM-79 Test reports, IES Files, and CRI/CCT measurements. See [Sensolighting.com](http://Sensolighting.com) for more information.

*\*Full photometric Reports and IES files available for every configuration*

## Color Metrics

### TM 30-15

Our clients deserve the best information possible about their lighting choices. That's why Senso has invested in the Illuminating Engineering Society (IES) TM 30-15, a new system that measures an LED light source's color rendering properties. Using Senso's state-of-the-art goniophotometer, this method identifies the optimal light source for your project and helps evaluate the trade-offs between efficacy and color rendering. Senso can provide TM 30-15 data for all of our products.

*\*Full Color Metric Info Available at [Sensolighting.com](http://Sensolighting.com)*

## LED Module Performance

**Output:** Up to 112 lumen/Watt

**Efficacy:** Color consistency within a 3-MacAdam Ellipse

**CCT:** 2500K - 6500K

**Color Rendering:** 93+ CRI

**Min. R Values:** R<sup>9</sup> - 60 R<sup>f</sup> - 90 R<sup>a</sup> - 100

## Driver and Power Consumption

**Dimming:** 1% dimming standard with 0.1% option  
Casambi wireless control available

**Ripple:** Industry leading Low ripple

**Efficiency:** Power Factor >0.9

Efficiency over 85%

Class 2 output for safety

**Installation:** Remote mounted

| Lumen Option    | 700lm | 1000lm | 1300lm | 2000lm | 3000lm |
|-----------------|-------|--------|--------|--------|--------|
| Fixture Wattage | 6.1W  | 9.1W   | 12.1W  | 19.8W  | 29.4W  |
| Delivered Lumen | 685lm | 1018lm | 1333lm | 2076lm | 3048lm |

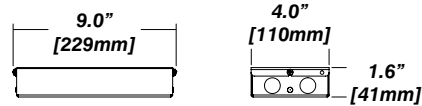
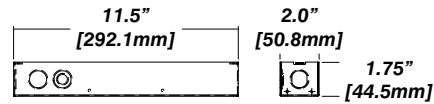
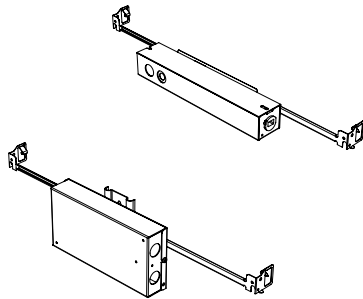
# ASTERIA 3

FIXED RECESSED LED DOWNLIGHT



## Standard Senso Housing - 910

### Dimension



### Included

Unless specified otherwise, this is provided as standard

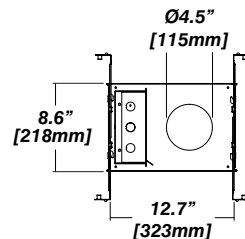
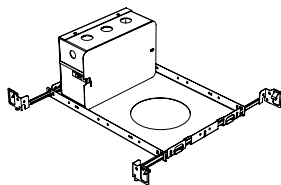
- Bar hanger** • Length: from 14-3/16" to 26"
- Driver with enclosure** • Galvanized steel enclosure
- Security wire** • Flexible aircraft cable, 12" long
- Easy to clip snap body included

\* driver can be installed either:

(A) laying on top of ceiling. (B) mounted to the bar hanger and fixed to the ceiling. (C) remote from the fixture, with the bar hanger still used to secure the fixture

## New Construction - 915

### Dimension



### Included

- Plaster Frame** • Galvanized steel construction with precise cut-out
- Bar hanger** • Length: from 14-3/16" to 26"
- Security wire** • Flexible aircraft cable, 12" long
- Easy to clip snap body included