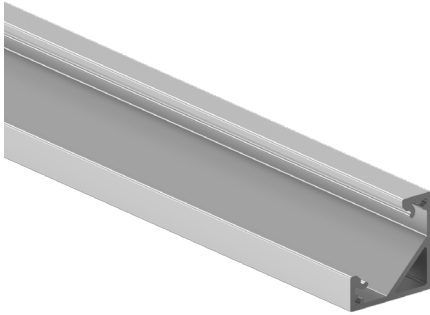


# B45C Basics Corner 45 Channel

Contractor Grade Extruded aluminum profile

**Bbasics**  
by luminii



## Features

Basics by luminii Contractor-Grade corner 45° extrusions compatible with Basics by luminii LED strips.

### Finish

Silver anodized

### Mounting

Fixed Clip Mounting Bracket

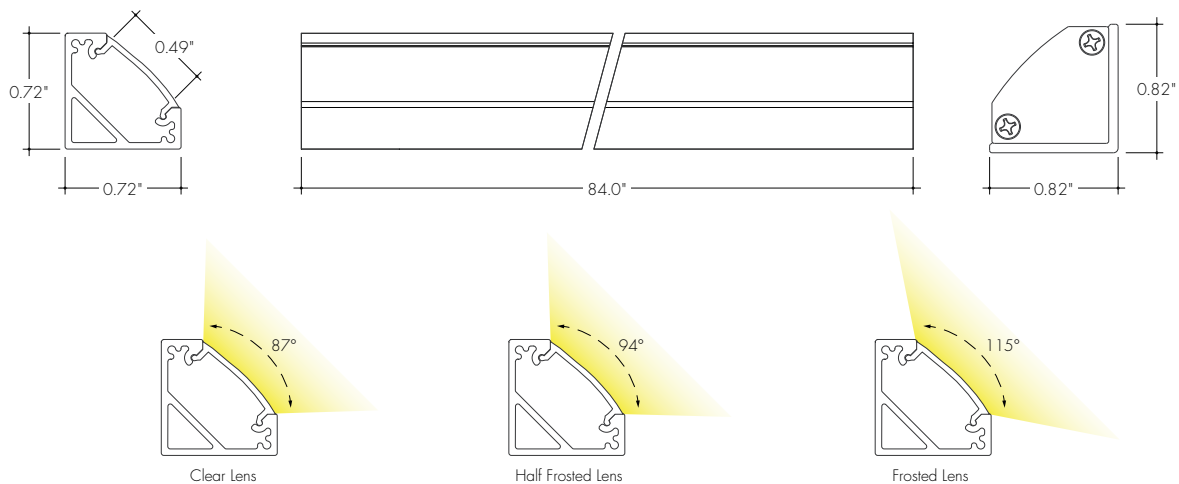
### Diffuser Lens

Polycarbonate, snap-in-place, UV resistant

### Warranty

5 Years

## Product Dimensions



### INCLUDED MOUNTING ACCESSORIES

EXTRUSION LENGTH	MOUNTING HARDWARE	END CAP (PAIR)
84"	6	1

Each pair of endcaps includes 1x H0 (no wire feed hole) and 1x H1 (with hole) where applicable. Additional endcaps and mounting clips are available for purchase.

### TRANSMISSION PERCENTAGE (COMPARED TO LED TAPE WITHOUT CHANNEL)

LENS	TRANSMISSION %
Clear	78%
Half Frosted	68%
Frosted	52%

See LED tape spec sheet for lens dotting characteristics & compatibility  
Use complete Dotting Chart Tool online for more dotting information ([Link](#))

## Ordering code

MODEL	LENGTH	LENS	MOUNTING <sup>2</sup>	FINISH
B45C - Basics Corner 45° Channel <sup>1</sup>	84 - 84"	C - Clear HF - Half Frosted F - Frosted	FC45 - Fixed Clip 45°	SA - Silver Anodized

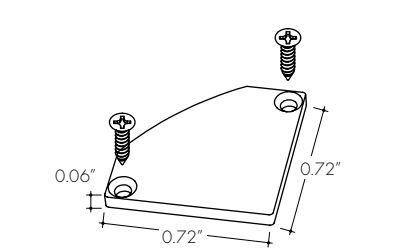
<sup>1</sup> - End Caps are included with channel, one of H0 (no hole) and one of H1 (with hole). Order additional End Caps as necessary.

<sup>2</sup> - Mounting Clips are included with channel. Refer to chart above for provided mounting clip quantities. Order additional Mounting Clips as necessary.

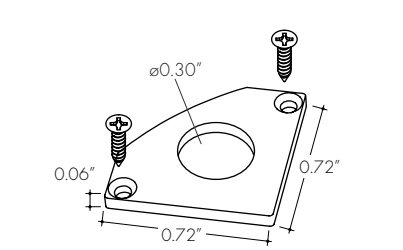
Accessories

All Channels come with a specified set of Mounting Clips and End Caps, see Ordering Code for details. Order additional Mounting Clips and End Caps as necessary.

**EC-B45C-H0-SA**  
End Cap



**EC-B45C-H1-SA**  
End Cap with Powerfeed Opening



**MB-B45C-SA**  
Fixed Clip 45°  
**-FC45**

