



\* MFG Model Number: BA42-XX



## Features

BA140-IP20 series is a Contractor Grade, efficient, field configurable and durable LED strip light. It is suitable for use in coves, under cabinets, in shelves, millwork, and virtually anywhere a linear light is required.

### Mounting

BA strip is equipped with 3M™ adhesive transfer tape.

### Applications

Indoor only - millwork, cove, architectural reveals, undercabinet, display case, handrail, accent lighting.

### Approvals

CE, UKCA, UL, Class 2

### Operating voltage

24 VDC

### Average Life (L70)

50,000 hours

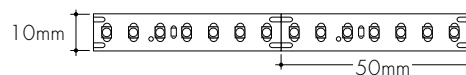
### Warranty

5 years



## Technical information

TYPE	BA140-IP20			
OUTPUT OPTIONS	SO	HO	VHO	XHO
Lumens Output (3000K)	643 lm/m	1224 lm/m	1768 lm/m	2612 lm/m
Average Power Consumption	6.6 W/m	13 W/m	19.7 W/m	26.2 W/m
Efficacy	98 lm/W	93 lm/W	90 lm/W	98 lm/W
Cutting Increment (mm)	50 mm			
LED/Meter	140			
Max Run Length (in series to 96W)	15 m	8 m	5 m	4 m
Dimensions	10 mm W x 1.5 mm H			
Ambient Operating Temperature Range	-40° C - 40° C			



CCT	Multiplier (reference - 3000K)	CRI
2700K	0.90	90
3000K	1.00	90
3500K	1.03	90

## Ordering code

MODEL	OUTPUT	CCT	REEL SIZE
BA140-IP20 - Basics Strip, Dry Location	SO - Standard HO - High VHO - Very High XHO - Extreme	27K - 2700K 30K - 3000K 35K - 3500K	R10m - Reel, 10 meter



# Basics Strip BA140-IP20

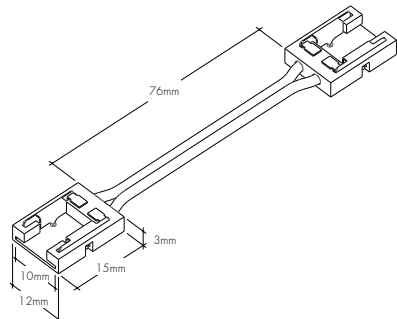
## Minii Connectors

Minii connectors are easy, field-installable accessories that make joining LL strip simple! Their minimal width allows them to fit into extrusions, while their transparent frame eliminates dark spots.

**Note: verify internal extrusion dimensions to confirm compatibility**

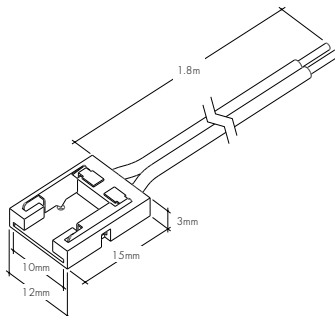
### LL-PJC-10

Jumper minii connector with 76mm wire for BA140-IP20 LED strip



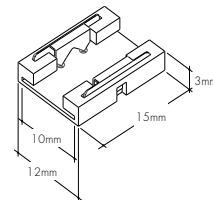
### LL-PFC-10-1.8M

Power feed minii connector with 1.8m wire for BA140-IP20 LED strip

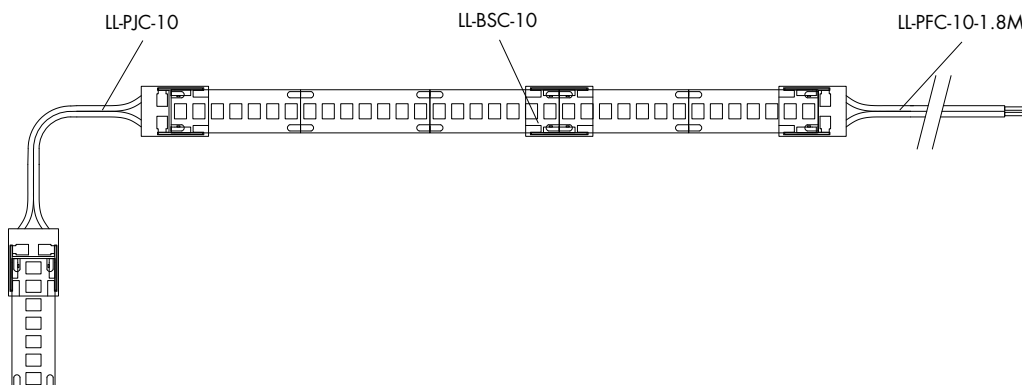


### LL-BSC-10

Butt splice minii connector for BA140-IP20 LED strip



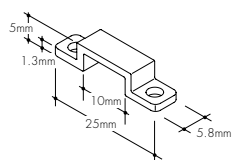
## Sample Layout



## Accessories

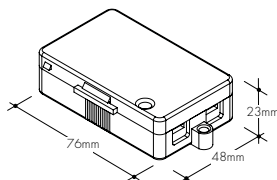
### CL1

Mounting clip



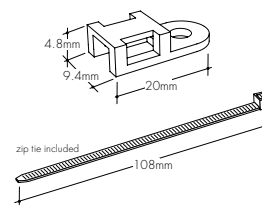
### LVSP-IP20-4T-BK

Low Voltage, 4 Terminal Splice Box, Black



### LL-ZIP

Cable/Wire Strain Relief Clip



Recommended every 300mm when LineLED strip is facing down



## Lens Options / Light Transmission



Clear



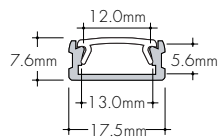
Half (50%)  
Frosted



Frosted



KS Channel (KSC-XX)



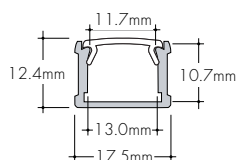
### Ordering code

MODEL	LENGTH	LENS	MOUNTING <sup>1</sup>	FINISH
KSC-KS Channel	2M-2 meter	C-Clear HF-Half Frosted F-Frosted	FC-Fixed Clip FC45-Fixed Clip 45°	SA-Silver Anodized

1 - Extrusion comes with 4 selected clips and 2 end caps.



KM Channel (KMC-XX)



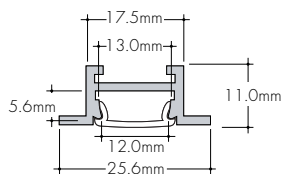
### Ordering code

MODEL	LENGTH	LENS	MOUNTING <sup>1</sup>	FINISH
KMC-KM Channel	2M-2 meter	C-Clear HF-Half Frosted F-Frosted	FC-Fixed Clip FC45-Fixed Clip 45°	SA-Silver Anodized

1 - Extrusion comes with 4 selected clips and 2 end caps.



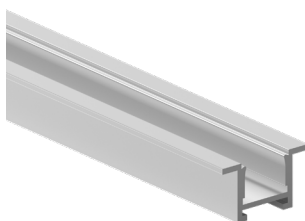
KRS Channel (KRSC-XX)



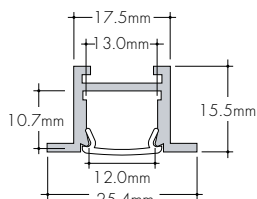
### Ordering code

MODEL	LENGTH	LENS	MOUNTING <sup>1</sup>	FINISH
KRSC-KRS Channel	2M-2 meter	C-Clear HF-Half Frosted F-Frosted	HS-Hard Surface Mounting Bracket GS-Gypsum Surface Mounting Bracket	SA-Silver Anodized

1 - Extrusion comes with 4 selected clips and 2 end caps.



KRM Channel (KRMC-XX)



### Ordering code

MODEL	LENGTH	LENS	MOUNTING <sup>1</sup>	FINISH
KRMC-KRM Channel	2M-2 meter	C-Clear HF-Half Frosted F-Frosted	HS-Hard Surface Mounting Bracket GS-Gypsum Surface Mounting Bracket	SA-Silver Anodized

1 - Extrusion comes with 4 selected clips and 2 end caps.

## Installation

All mounting channels are field cuttable using miter saw with circular blade suitable for cutting aluminum.

## Ordering

Extrusion are sold separately.

## Led Dotting per Extrusion with BA140-IP20

different output options may slightly vary

Extrusion	Clear Lens	Half-Frosted Lens	Frosted Lens
<b>KSC</b>	CD	CD	CD
<b>KMC</b>	CD	SD	ND
<b>KRSC</b>	CD	CD	SD
<b>KRMC</b>	CD	CD	ND



**CD** - Clear Dotting  
**SD** - Slight Dotting  
**ND** - No Dotting



## Lens Options / Light Transmission



Clear



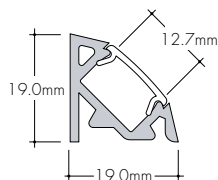
Half (50%)  
Frosted



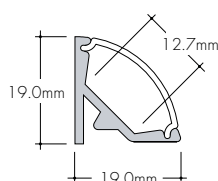
Frosted



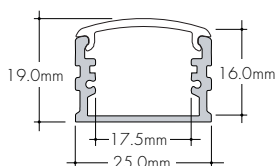
K45V Channel (K45V-XX)



K45R Channel (K45R-XX)



Basics X-Large Channel  
(BXC-XX)



### Ordering code

MODEL	LENGTH	LENS	MOUNTING <sup>1</sup>	FINISH
K45VC - K45V Channel	2M - 2 meter	C - Clear HF - Half Frosted F - Frosted	CB - Concealed Bracket	SA - Silver Anodized

1 - Extrusion comes with 4 selected clips and 2 end caps.

### Ordering code

MODEL	LENGTH	LENS	MOUNTING <sup>1</sup>	FINISH
K45RC - K45R Channel	2M - 2 meter	C - Clear HF - Half Frosted F - Frosted	CB - Concealed Bracket	SA - Silver Anodized

1 - Extrusion comes with 4 selected clips and 2 end caps.

### Ordering code

MODEL	LENGTH	LENS	MOUNTING <sup>1</sup>	FINISH
BXC - Basics X-Large Channel	2M - 2 meter	F - Frosted	FC - Fixed Clip	SA - Silver Anodized

1 - Extrusion comes with 4 selected clips and 2 end caps.

## Installation

All mounting channels are field cuttable using miter saw with circular blade suitable for cutting aluminum.

## Ordering

Extrusion are sold separately.

## Led Dotting per Extrusion with BA140-IP20

different output options may slightly vary

Extrusion	Clear Lens	Half-Frosted Lens	Frosted Lens
K45VC	CD	CD	ND
K45RC	CD	ND	ND
BXC	-	-	ND



CD - Clear Dotting  
SD - Slight Dotting  
ND - No Dotting

