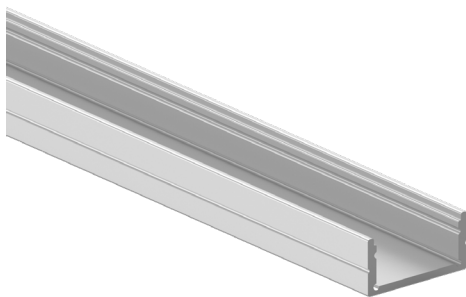


Features

Basics Contractor-Grade Kilo extrusions compatible with Basics LED strips.



Finish

Silver anodized Channel, White plastic End Caps

Diffuser Lens

Polycarbonate, snap-in-place, UV resistant

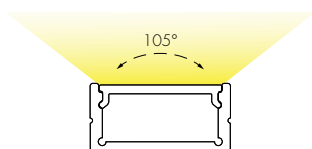
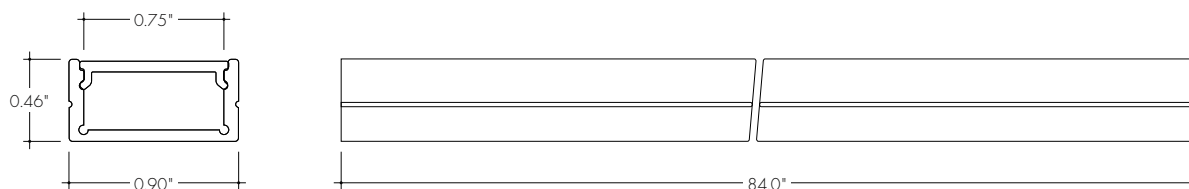
Mounting

Fixed Clip Mounting Bracket

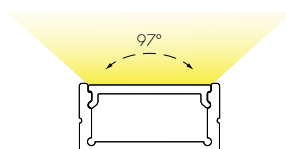
Warranty

5 Years

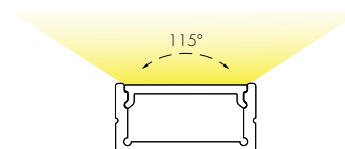
Product Dimensions



Clear Lens



Half Frosted Lens



Frosted Lens

INCLUDED MOUNTING ACCESSORIES

EXTRUSION LENGTH	FIXED CLIP	ADJUSTABLE	END CAP (PAIR)
84"	6	6	1

Each pair of endcaps includes 1x H0 (no wire feed hole) and 1x H1 (with hole) where applicable. Additional endcaps and mounting clips are available for purchase.

TRANSMISSION PERCENTAGE (COMPARED TO LED TAPE WITHOUT CHANNEL)

LENS	TRANSMISSION %
Clear	85%
Half Frosted	76%
Frosted	60%

See LED tape spec sheet for lens dotting characteristics & compatibility
Use complete Dotting Chart Tool online for more dotting information ([Link](#))

Ordering code

MODEL	LENGTH	LENS	MOUNTING ²	FINISH
BLC - Basics Large Channel ¹	84 - 84"	C - Clear HF - Half Frosted F - Frosted	FC - Fixed Clip A - Adjustable	SA - Silver Anodized

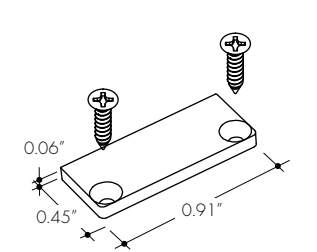
1 - End Caps are included with channel, one of H0 (no hole) and one of H1 (with hole). Order additional End Caps as necessary.

2 - Mounting Clips are included with channel. Refer to chart above for provided mounting clip quantities. Order additional Mounting Clips as necessary.

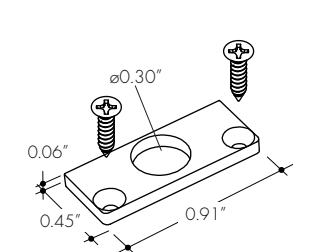
Accessories

All Channels come with a specified set of Mounting Clips and End Caps, see Ordering Code for details. Order additional Mounting Clips and End Caps as necessary.

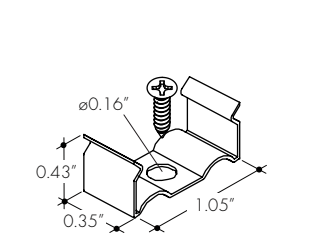
EC-BLC-H0-SA
Silver Anodized End Cap



EC-BLC-H1-SA
Silver Anodized End Cap with powerfeed opening



MB-BLC-SS
Fixed Clip
-FC



MB-BLC-A-SS
Adjustable Clip
-A

