



Features

The KILOR Channel is a linear aluminum extrusion that has been designed to fit many LED lighting needs and specifically high output recess-mount applications. Substantial aluminum mass in profile provides excellent heat sink and physical protection for high power LEDs. The wide profile design can accommodate up to two rows of LED strips making the KILOR Channel aluminum extrusion ideal for bright general lighting applications.

Finish

Silver anodized, White, Black, Bronze

Diffuser Lens

Polycarbonate, snap-in-place, UV resistant

Mounting

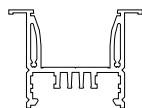
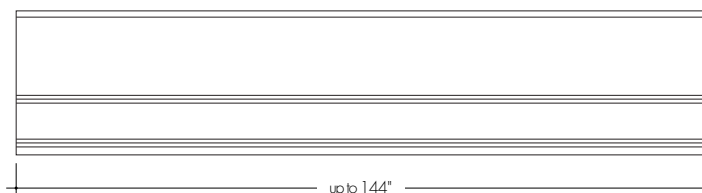
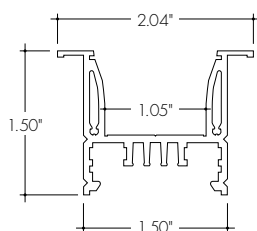
Multiple mounting clips

Warranty

7 Years

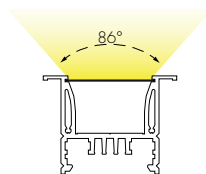
Declare.  **MADE IN U.S.A**

Product Dimensions

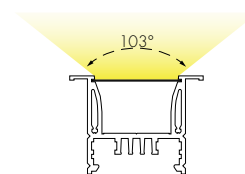


No Lens

* Only ordered when purchasing separate roll lens (page 3)



Clear Lens



Frosted Lens

INCLUDED MOUNTING ACCESSORIES

EXTRUSION LENGTH	GYPSUM SURFACE	ENDCAP PAIR
48"	3	1
72"	4	1
96"	5	1
120"	5	1
144"	6	1

Each pair of endcaps includes 2x H3 (no wire feed hole) end caps where applicable. Additional endcaps and mounting clips are available for purchase.

TRANSMISSION PERCENTAGE (COMPARED TO LED TAPE WITHOUT CHANNEL)

LENS	TRANSMISSION %
Clear Lens	85%
No Lens	90%
Frosted Lens	75%

See LED tape spec sheet for lens dotting characteristics & compatibility. Use complete Dotting Chart Tool online for more dotting information ([Link](#))

Ordering Code

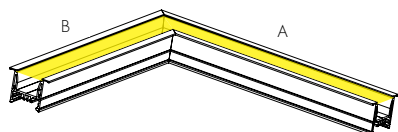
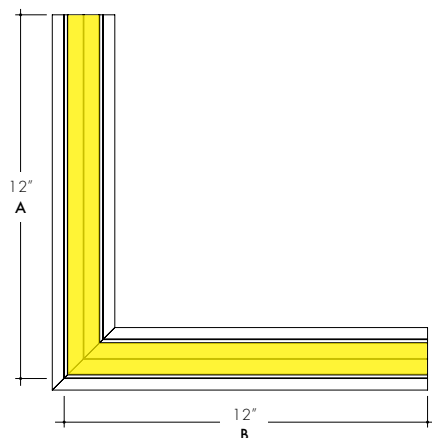
MODEL	LENGTH	LENS	MOUNTING ²	FINISH ⁴
KILORC-KILOR Channel ¹	48 - 48" 72 - 72" 96 - 96" ³ 120 - 120" ³ 144 - 144" ³	F - Frosted C - Clear N - No Lens	GS - Gypsum Surface Mounting Clip	<div>BASE</div> <div>SA - Silver Anodized</div> <div>POWDER COATED</div> <div>BK - Black</div> <div>BZ - Bronze</div> <div>WH - White</div>

1 - End Caps are included with channel, two of H3(no hole). Order additional End Caps as necessary.
2 - Mounting Clips are included with channel. Refer to chart above for provided mounting clip quantities. Order additional Mounting Clips as necessary.

3 - For Channels and Lenses over 96", incremental shipping charges will apply.
4 - Powder Coat finishes may have extended lead times.
Custom RALs are available, please consult Inside Sales with specific request.

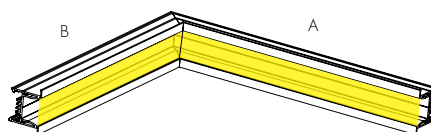
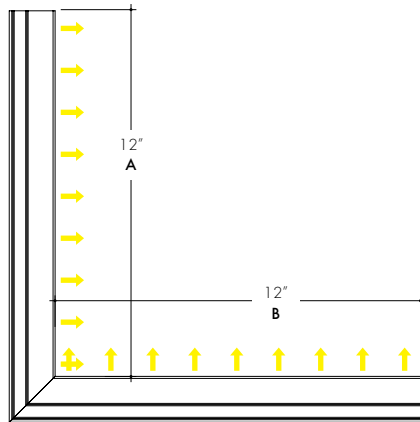
KiloR Channel Corner Options

KILORC-FC-90 Flat Corner



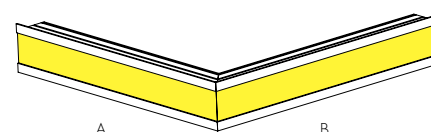
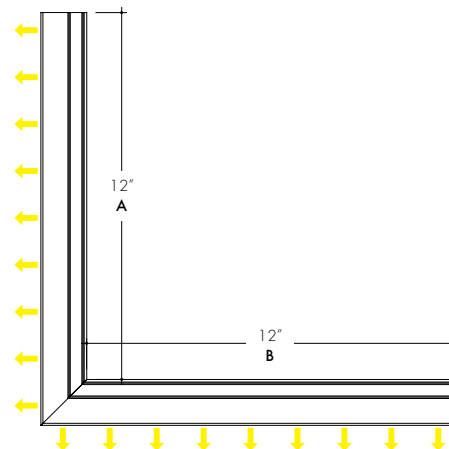
Dimensions measured for the length of recessed needed

KILORC-IC-90 Inner Corner



Dimensions measured for the length of the outer (longer) length of the recessed needed

KILORC-OC-90 Outside Corner



Dimensions measured for the length of recessed needed

TRANSMISSION PERCENTAGE (COMPARED TO LED TAPE WITHOUT CHANNEL)

LENS	TRANSMISSION %
CORNER-Clear Lens	85%
CORNER-No Lens	90%
Frosted Lens	75%

See LED tape spec sheet for lens dotting characteristics & compatibility

Ordering Code

MODEL	CORNER TYPE	CORNER ANGLE ²	LENS	MOUNTING ³	FINISH ⁴
KILORC-Kilo Recessed Channel ¹	IC-Inner Corner FC-Flat Corner OC-Outer Corner	90-90°	F-Frosted C-Clear N-No Lens	GS-Gypsum Surface Mounting Clip	<div>BASE</div> <div>SA-Silver Anodized</div> <div>POWDER COATED</div> <div>BK-Black</div> <div>BZ-Bronze</div> <div>WH-White</div>

1 - End Caps are not included with channel, order End Caps as necessary.

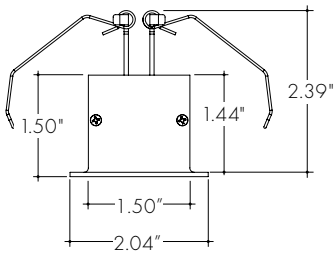
2 - Custom Corner angle are available upon request.

3 - 2 Mounting Clips are included with each corner. Order additional Mounting Clips as necessary.

4 - Powder Coat finishes may have extended lead times. Custom RALs are available, please consult Inside Sales with specific request.

Mounting Clips

MB-KR
Gypsum Surface Mounting Bracket
-GS

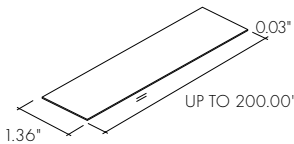


All Channels come with a specified set of Mounting Clips and End Caps, see Ordering Code for details. Order additional Mounting Clips and EndCaps as necessary.

Lens

Pair with Kilo Channel ("No lens" option in extrusion ordering code) for continuous runs extending past 144". Field cuttable, order in 10ft increments up to 200ft.

KILOC-CC
Kilo Channel Lens (Clear)

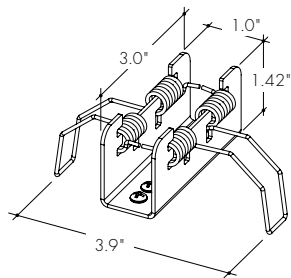


KILOC-FF
Kilo Channel Lens (frosted)

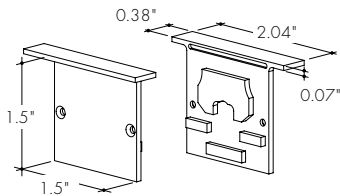


Accessories

MB-KR
Gypsum Surface Mounting Bracket
-GS



EC-KILORC-H3-XX
End Cap



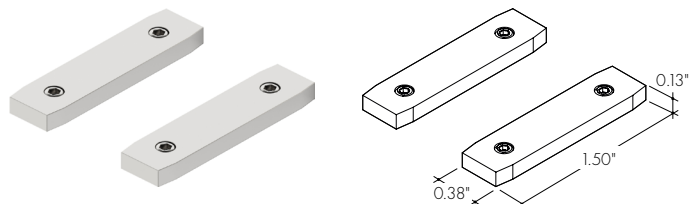
XX	Color
SA	Silver Anodized
WH	White
BK	Black
BZ	Bronze

One bracket needed for every 2 feet of extrusion. Min 2.

Joiners

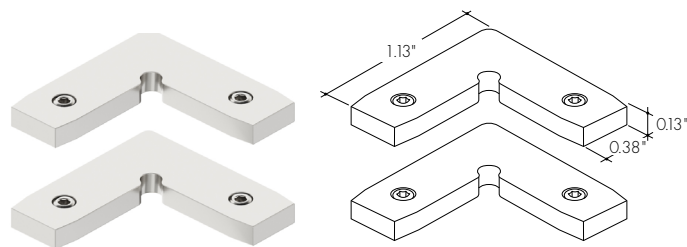
JOIN-M-ST

Medium Channel Straight Joiner, sold in pairs



JOIN-M-L

Medium Channel Flat Corner Joiner, sold in pairs



JOIN-M-IN

Medium Channel Inner or Outer Corner Joiner, sold in pairs

