

# LETO 11.5

SURFACE MOUNT WET LED CYLINDER  
TUNABLE WHITE/WARM DIM



## Features

- Faceted and Smooth metal reflectors provide beam spreads between 10° to 80°.
- Nine drivers selections available to cover wide range of applications.
- Three output options available up to 2000 lumens.
- 5 year warranty.

## Finish Options

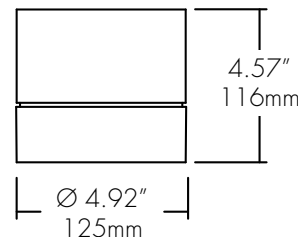
- ☐ White   ☐ Mocha  
☐ Black   ☐ Charcoal  
☐ Silver   ☐ Cerulean  
☐ Firebrick



Declare.



Made in Canada  
with Imported Parts



## Technical Information

TYPE	WD1830			TW2765
<b>OUTPUT OPTIONS</b>	700 lm	1000lm	1500lm	1500lm
<b>Fixture wattage</b>	7.9 W	11.3 W	16.3 W	19.8 W
<b>Delivered Lumen at full on</b>	714 lm	903 lm	1534 lm	1397 lm
<b>Efficacy</b>	90 lm/W	80 lm/W	94 lm/W	71 lm/W
<b>Center Beam Candlepower (10° Faceted Reflector)</b>	5958 cd	7535 cd	12800 cd	11657 cd

CCT	CRI	TM-30		
		R <sub>f</sub>	R <sub>g</sub>	R <sub>9</sub>
1800K	94	90	93	61
3000K	94	89	97	72
2700K	91	90	96	59
6500K	93	87	97	73

Integral Driver Example: Fixture LET115W-SM-07-WD1830-F10-CL-WH-WH-PHSD-NA

Remote Driver Example: Fixture LET115W-SM-07-WD1830-F10-CL-WH-WH-010L-NA  
HRM-LET115W-SM-07-WD1830-010L-NA

## Ordering Code

### Fixture

MODEL	TYPE	OUTPUT	CCT	OPTIC	ACCESSORY	BODY FINISH	BAFFLE FINISH
LET115W - Leto 11.5 Wet	SM - Surface Mount	07 - 700 lumens <sup>1</sup> 10 - 1000 lumens 15 - 1500 lumens	WD1830 - Warm Dim, 1800K-3000K TW2765 - Tunable White, 2700K-6500K <sup>5</sup>	F10 - 10 Degree, Faceted F18 - 18 Degree, Faceted F30 - 30 Degree, Faceted F45 - 45 Degree, Faceted F60 - 60 Degree, Faceted S30 - 30 Degree, Smooth S45 - 45 Degree, Smooth S80 - 80 Degree, Smooth	CL - Clear Lens DL - Diffusing Lens	Standard WH - White BK - Black SL - Silver  Premium <sup>2</sup> MA - Mocha CC - Charcoal CR - Cerulean FB - Firebrick	Standard WH - White BK - Black SL - Silver  Premium <sup>2</sup> MA - Mocha CC - Charcoal CR - Cerulean FB - Firebrick
DRIVER <sup>3</sup>				DRIVER OPTIONS <sup>5</sup>			

PHSD - Forward/Reverse Phase, 1% Dimming, 120V Only  
 010S - 0-10V, 1% Dimming, 120/277V  
 0103 - 0-10V, 1% Dimming, 347V Only  
 010L - EdoLED, 0-10V, Linear, 0.1% Dimming, 120/277V  
 010G - EdoLED, 0-10V, Log, 0.1% Dimming, 120/277V  
 DALI - EdoLED, DALI Protocol 2, DT-6, 0.1% Dimming, 120/277V (Standard as LOG)<sup>7</sup>  
 DALI8 - EdoLED, DALI Protocol 2, DT-8, 0.1% Dimming, 120/277V (Standard as LOG)<sup>7</sup>  
 LUTE - Lutron HiLume Ecodigital, 1% Dimming, 120V/277V  
 DMX - EdoLED, DMX, 0.1% Dimming, 120V/277V

NA - None  
 EMG - Emergency Driver<sup>4</sup>

- 1 - 700 lumens is not available with LUTE driver.  
 2 - Premium finishes may have extended lead times. Custom RALs are available, please consult Inside Sales with specific request.  
 3 - All drivers remote except PHSD/010S driver options.  
 4 - Emergency option comes prewired from factory with driver in remote housing. 8W of continuous power provided for a minimum of 90 minutes. Must be installed within 30 feet of luminaire using 18 AWG wire. Not available with 0103, DMX, DALI8 or LUTE Driver.  
 5 - AWWNR/CSMB available upon request, contact Senso for details.  
 6 - TW2765 only available with 15 lumens and 010L/010G/DALI8/DMX. Always remote mounted. Cannot use with EMG.  
 7 - DALI and DALI8 driver options use logarithmic dimming curve as standard. For LINEAR dimming curve, add "LIN" after the dimming code, i.e. DALI LIN

CONTACT FACTORY FOR MORE OPTIONS.

Lens & Accessory Options

- OPTC-ACC-CL-94MM**

Clear Lens

Also available with complete fixture, use ordering code.

**-CL**
- OPTC-ACC-DL-94MM**

Diffusing Lens

Also available with complete fixture, use ordering code.

**-DL**



Light Loss Factor: 100%\*



Light Loss Factor: 87%\*

\*Light Loss Factor calculated with 60° faceted reflector.

Optics

- RFLC-FXX-94MM**

Faceted Reflector

Also available with complete fixture, use ordering code.

**-F10/-F18/-F30/-F45/-F60**
- RFLC-SXX-94MM**

Smooth Reflector

Also available with complete fixture, use ordering code.

**-S30/-S45/-S80**



FXX	Optic
F10	10° Faceted
F18	18° Faceted
F30	30° Faceted
F45	45° Faceted
F60	60° Faceted
S30	30° Smooth
S45	45° Smooth
S80	80° Smooth

# LETO 11.5

## SURFACE MOUNT WET LED CYLINDER

### TUNABLE WHITE/WARM DIM

## Remote Driver Housing

Depending on the options selected in the order code on page 1, a Remote Driver Housing may be required. This will automatically be generated and put on your order as necessary.

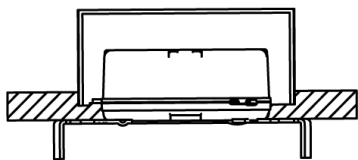
REMOTE DRIVER	MODEL	OUTPUT	CCT	DRIVER	DRIVER OPTIONS
HRM-Housing, Remote	LET115W-SM-Leto 11.5 Wet Surface Mount	Same as Fixture	Same as Fixture	Same as Fixture	Same as Fixture

Maximum mounting distance to luminaire using 18 AWG wire

010S	PHSD	010L	010G	DALI DALI8	DMX	LUTE
16'	16'	72'	72'	72'	149'	15'

## 4" J-box

Minimum volume required to mount drivers in junction box: 70mm x 40mm x 30mm.

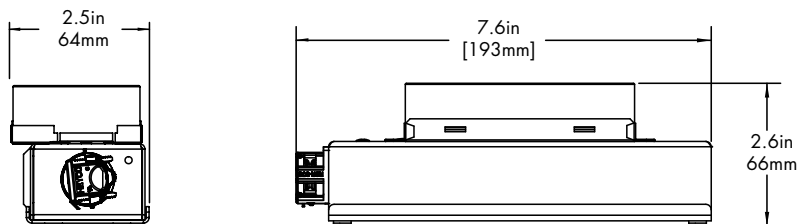


### Driver

PHSD

010S

## HRM Single with Externally Mounted Driver



### Driver

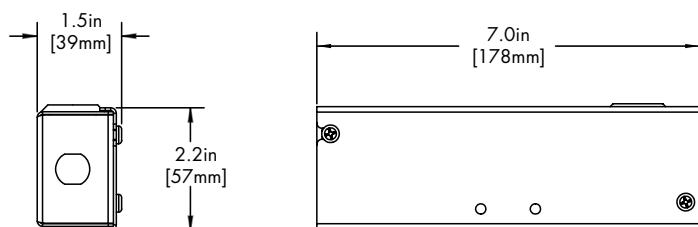
010L or 010G

010S

010L or 010G or 010S

DALI or LUTE

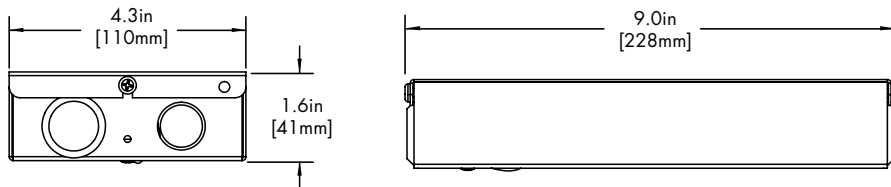
## HRM Single



### Driver

PHSD

## HRM Double



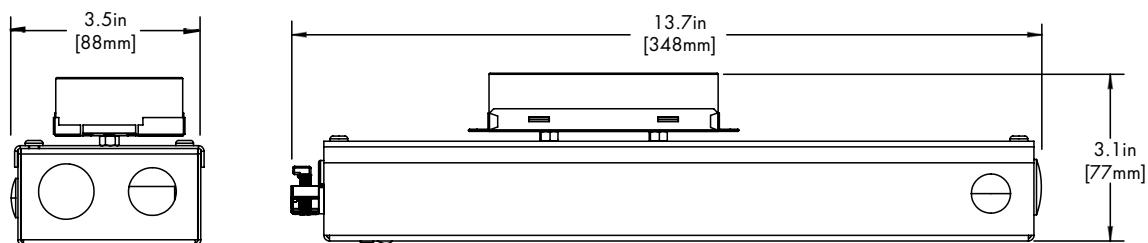
### Driver

DALI8

DMX

## EMG Emergency Driver

120 minute EMG operation time.



### Driver

EMG

# LETO 11.5

SURFACE MOUNT WET LED CYLINDER  
TUNABLE WHITE/WARM DIM

## Standard Finishes

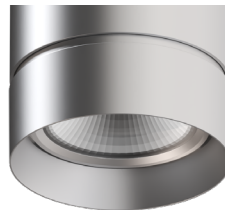
**BK**  
Black



**WH**  
White

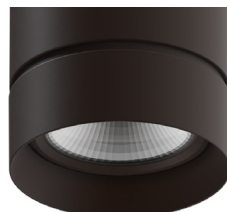


**SL**  
Silver



## Premium Finishes

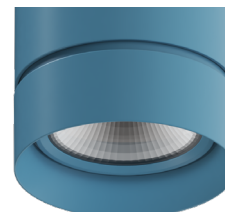
**MA**  
Mocha



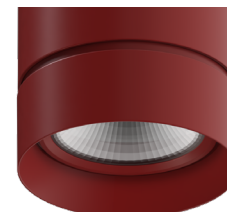
**CC**  
Charcoal



**CR**  
Cerulean

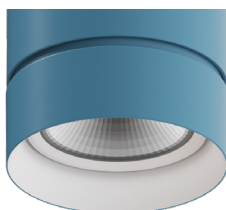
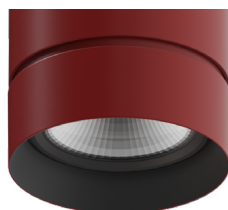


**FB**  
Firebrick



## Two Tone Finishes

Inside finish refers to Baffle Finish selection from page 1. Any combination may be used for baffle and body finishes.



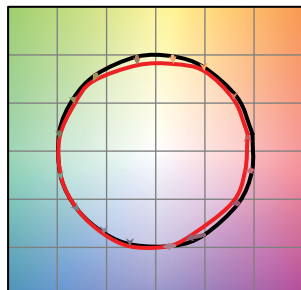
# LETO 11.5

SURFACE MOUNT WET LED CYLINDER  
TUNABLE WHITE/WARM DIM

## TM-30

Warm Dim 1800K

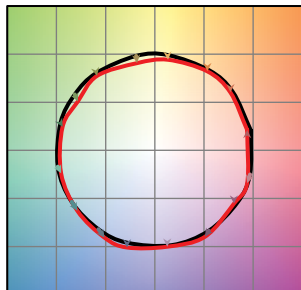
COLOR VECTOR GRAPHIC



— Reference Source — Test Source

Warm Dim 3000K

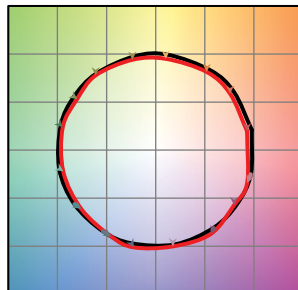
COLOR VECTOR GRAPHIC



— Reference Source — Test Source

Tunable White 2700K

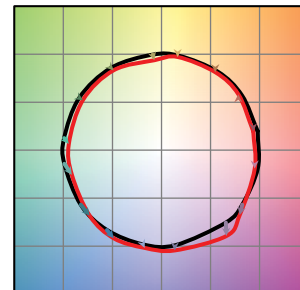
COLOR VECTOR GRAPHIC



— Reference Source — Test Source

Tunable White 6500K

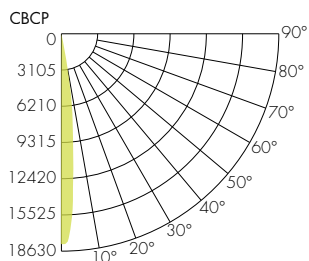
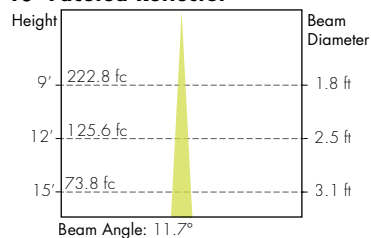
COLOR VECTOR GRAPHIC



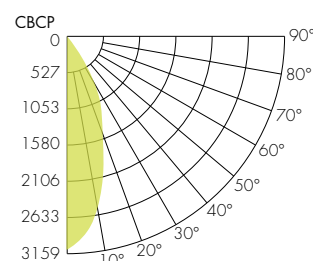
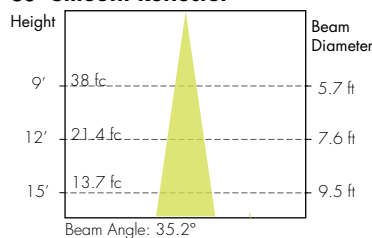
— Reference Source — Test Source

## Photometry

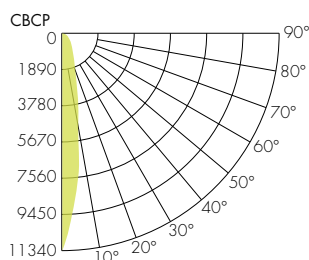
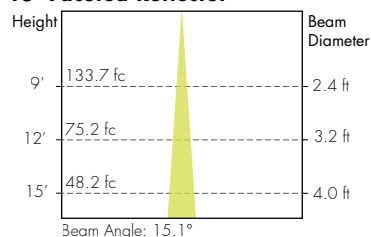
### 10° Faceted Reflector



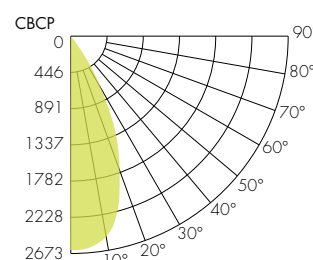
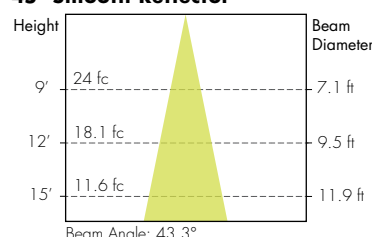
### 30° Smooth Reflector



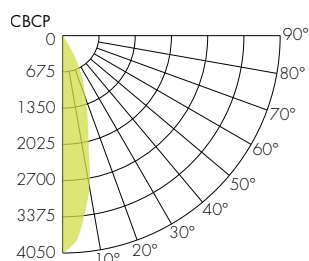
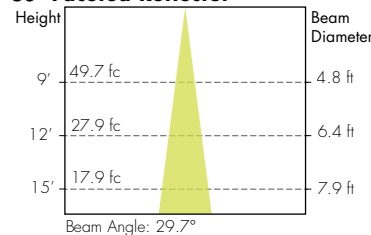
### 18° Faceted Reflector



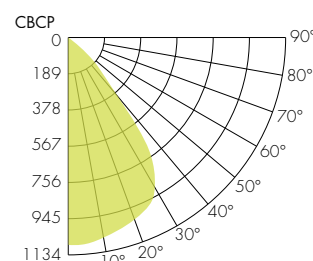
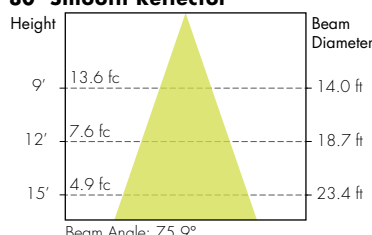
### 45° Smooth Reflector



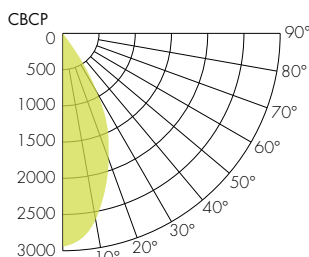
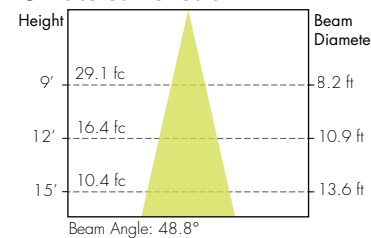
### 30° Faceted Reflector



### 80° Smooth Reflector



### 45° Faceted Reflector



### 60° Faceted Reflector

