

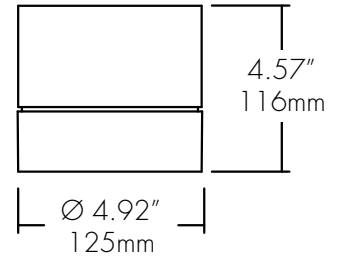
LETO 11.5

SURFACE MOUNT WET LED CYLINDER



Features

- Faceted and Smooth metal reflectors provide beam spreads between 10° to 80°.
- Nine drivers selections available to cover wide range of applications.
- Three output options available up to 2000 lumens.
- 5 year warranty.



Finish Options

- White
- Black
- Silver
- Mocha
- Charcoal
- Cerulean
- Firebrick



Declare. Made in Canada with Imported Parts

Technical Information

OUTPUT OPTIONS	700 lm	1000 lm	1500lm
Fixture wattage	6.1 W	9.1 W	14.0 W
Delivered Lumen at 3500K	647 lm	965 lm	1474 lm
Efficacy	106 lm/W	106 lm/W	105 lm/W
Center Beam Candlepower (10° Faceted Reflector)	5399 cd	8052 cd	12300 cd

CCT	Multiplier	CRI	TM-30		
			R _f	R _g	R _y
2500K	0.81	92	90	104	77
2700K	0.92	92	91	102	61
3000K	0.97	95	92	102	61
3500K	1.00	95	93	101	72
4000K	1.07	95	92	103	68
6500K	1.05	96	91	100	89

Integral Driver Example: Fixture LET115W-SM-07-25K-F10-CL-WH-WH-PHSD-NA
 Remote Driver Example: Fixture LET115W-SM-07-25K-F10-CL-WH-WH-010L-NA
 HRM-LET115W-SM-07-25K-010L-NA

Ordering Code

Fixture

MODEL	TYPE	OUTPUT	CCT	OPTIC	ACCESSORY	BODY FINISH	BAFFLE FINISH
LET115W - Leto 11.5 Wet	SM - Surface Mount	07 - 700 lumens (6.1W) ¹ 10 - 1000 lumens (9.1W) 15 - 1500 lumens (14.0W)	25K - 2500K 27K - 2700K 30K - 3000K 35K - 3500K 40K - 4000K 65K - 6500K	F10 - 10 Degree, Faceted F18 - 18 Degree, Faceted F30 - 30 Degree, Faceted F45 - 45 Degree, Faceted F60 - 60 Degree, Faceted S30 - 30 Degree, Smooth S45 - 45 Degree, Smooth S80 - 80 Degree, Smooth	CL - Clear Lens DL - Diffusing Lens	Standard WH - White BK - Black SL - Silver Premium ² MA - Mocha CC - Charcoal CR - Cerulean FB - Firebrick	Standard WH - White BK - Black SL - Silver Premium ² MA - Mocha CC - Charcoal CR - Cerulean FB - Firebrick

DRIVER³

DRIVER OPTIONS⁵

- PHSD - Forward/Reverse Phase, 1% Dimming, 120V Only
- 010S - 0-10V, 1% Dimming, 120/277V
- 0103 - 0-10V, 1% Dimming, 347V Only
- 010L - EdoLED, 0-10V, Linear, 0.1% Dimming, 120/277V
- 010G - EdoLED, 0-10V, Log, 0.1% Dimming, 120/277V
- DALI - EdoLED, DALI Protocol 2, DT-6, 0.1% Dimming, 120/277V (Standard as LOG)⁶
- DALI8 - EdoLED, DALI Protocol 2, DT-8, 0.1% Dimming, 120/277V (Standard as LOG)⁶
- LUTE - Lutron Hilume Ecodigital, 1% Dimming, 120V/277V
- DMX - EdoLED, DMX, 0.1% Dimming, 120V/277V

- NA - None
- EMG - Emergency Driver⁴

1 - 700 lumens is not available with LUTE driver.
 2 - Premium finishes may have extended lead times. Custom RALs are available, please consult Inside Sales with specific request.
 3 - All drivers remote except PHSD/010S driver options.
 4 - Emergency option comes prewired from factory with driver in remote housing. 8W of continuous power provided for a minimum of 90 minutes. Must be installed within 30 feet of luminaire using 18 AWG wire. Not available with 0103, DMX, DALI8 or LUTE Driver.
 5 - Awnr/CSMB available upon request, contact Senso for details.
 6 - DALI and DALI8 driver options use logarithmic dimming curve as standard. For LINEAR dimming curve, add "LIN" after the dimming code, i.e. DALI LIN

CONTACT FACTORY FOR MORE OPTIONS.

Lens & Accessory Options

OPTC-ACC-CL-94MM

Clear Lens

Also available with complete fixture, use ordering code.

-CL



Light Loss Factor: 100%*

OPTC-ACC-DL-94MM

Diffusing Lens

Also available with complete fixture, use ordering code.

-DL



Light Loss Factor: 87%*

*Light Loss Factor calculated with 60° faceted reflector.

Optics

RFLC-FXX-94MM

Faceted Reflector

Also available with complete fixture, use ordering code.

-F10/-F18/-F30/-F45/-F60



RFLC-SXX-94MM

Smooth Reflector

Also available with complete fixture, use ordering code.

-S30/-S45/-S80



FXX	Optic
F10	10° Faceted
F18	18° Faceted
F30	30° Faceted
F45	45° Faceted
F60	60° Faceted
S30	30° Smooth
S45	45° Smooth
S80	80° Smooth

Remote Driver Housing

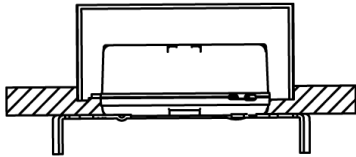
Depending on the options selected in the order code on page 1, a Remote Driver Housing may be required. This will automatically be generated and put on your order as necessary.

REMOTE DRIVER	MODEL	OUTPUT	CCT	DRIVER	DRIVER OPTIONS
HRM-Housing, Remote	LET115W-SM - Leto 11.5 Wet Surface Mount	Same as Fixture	Same as Fixture	Same as Fixture	Same as Fixture

Maximum mounting distance to luminaire using 18 AWG wire						
010S	PHSD	010L	010G	DALI DALI8	DMX	LUTE
16'	16'	72'	72'	72'	149'	15'

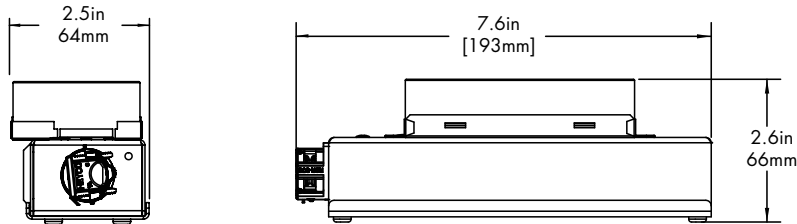
4" J-box

Minimum volume required to mount drivers in junction box: 70mm x 40mm x 30mm.



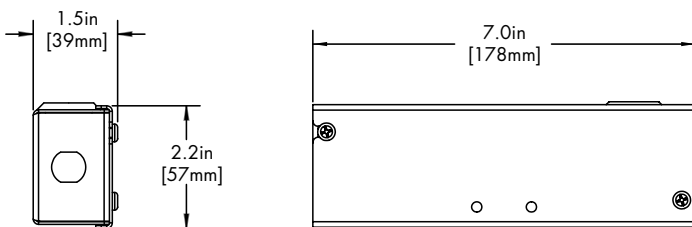
Driver
PHSD
010S

HRM Single with Externally Mounted Driver



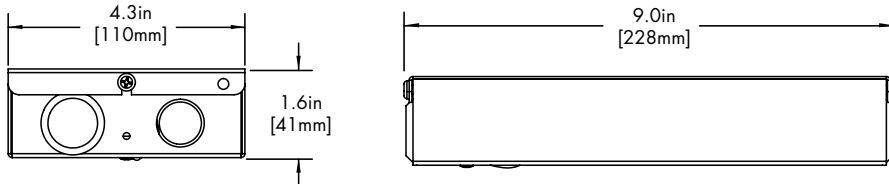
Driver
010L or 010G
010S
010L or 010G or 010S
DALI or LUTE

HRM Single



Driver
PHSD

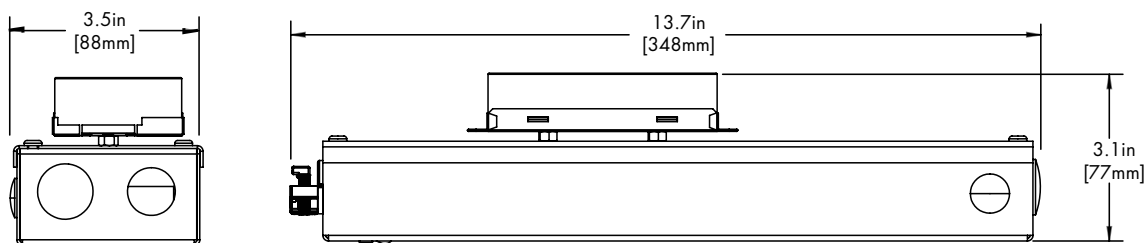
HRM Double



Driver
DALI8
DMX

EMG Emergency Driver

120 minute EMG operation time.



Driver
EMG

Standard Finishes

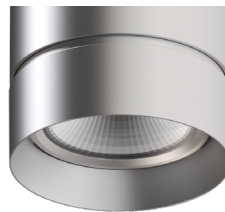
BK
Black



WH
White

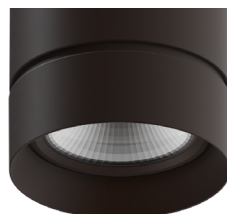


SL
Silver



Premium Finishes

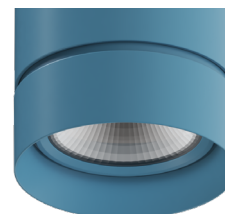
MA
Mocha



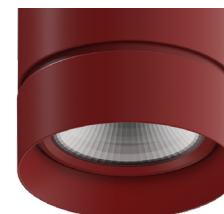
CC
Charcoal



CR
Cerulean

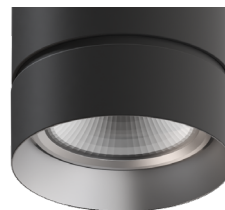
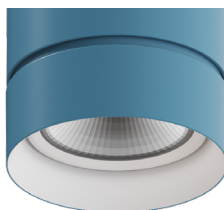
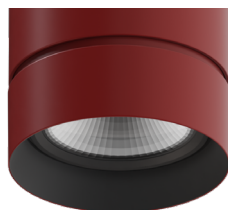


FB
Firebrick



Two Tone Finishes

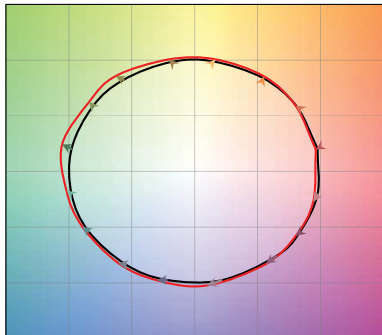
Inside finish refers to Baffle Finish selection from page 1. Any combination may be used for baffle and body finishes.



TM-30

2500K

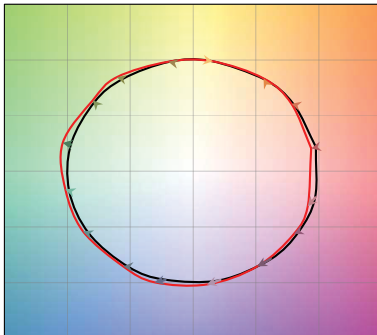
COLOR VECTOR GRAPHIC



— Reference Source — Test Source

2700K

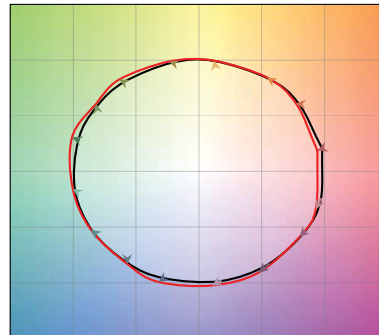
COLOR VECTOR GRAPHIC



— Reference Source — Test Source

3000K

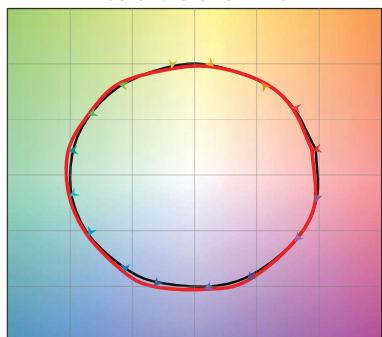
COLOR VECTOR GRAPHIC



— Reference Source — Test Source

3500K

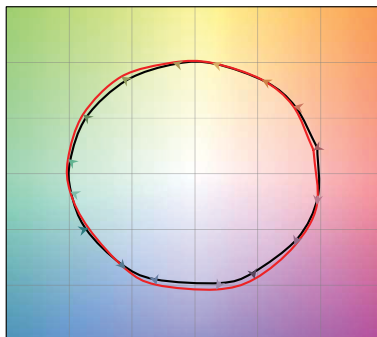
COLOR VECTOR GRAPHIC



— Reference Source — Test Source

4000K

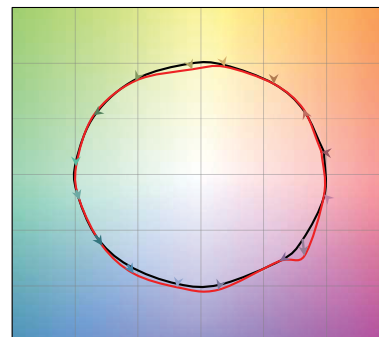
COLOR VECTOR GRAPHIC



— Reference Source — Test Source

6500K

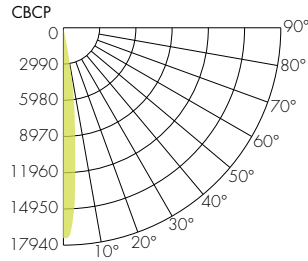
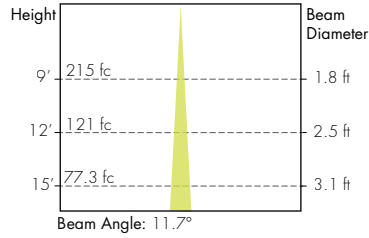
COLOR VECTOR GRAPHIC



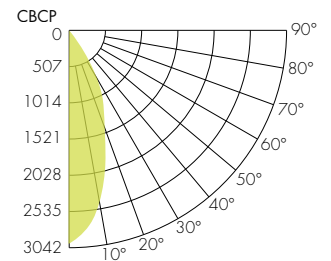
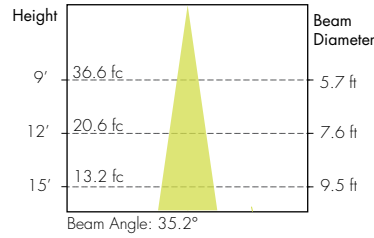
— Reference Source — Test Source

Photometry

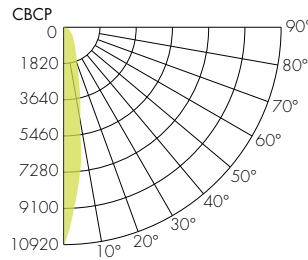
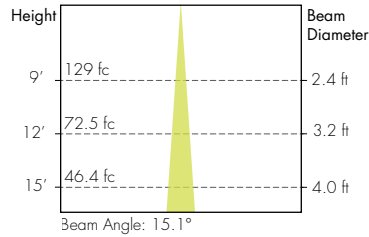
10° Faceted Reflector



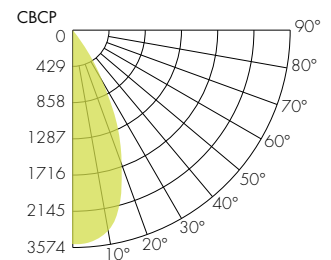
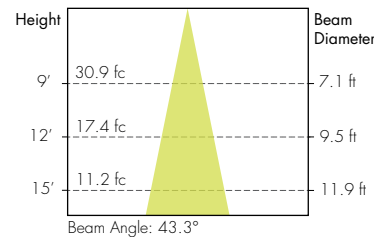
30° Smooth Reflector



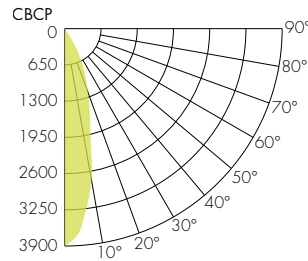
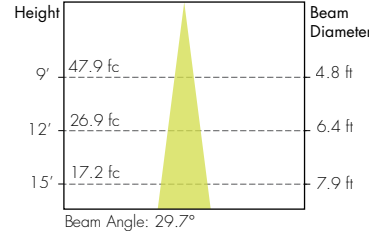
18° Faceted Reflector



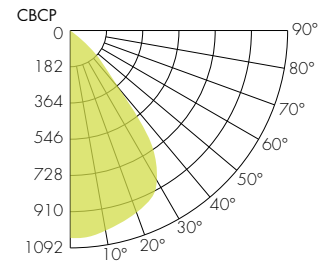
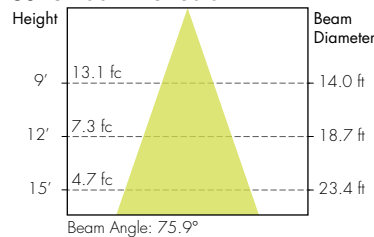
45° Smooth Reflector



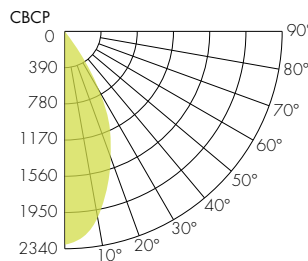
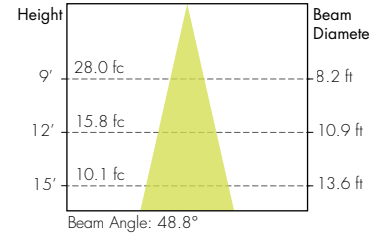
30° Faceted Reflector



80° Smooth Reflector



45° Faceted Reflector



60° Faceted Reflector

