

# LETO 8

ADJUSTABLE RECESSED DOWNLIGHT



**Leto 8 - Adjustable Recessed downlight.** LETO 8 is a round, recessed, directional LED fixture that features a directional aperture fully adjustable to 30° and creates a classy, scalloping feature with the right application.

## Ordering Code

Fixture	<b>680</b>					
	1	2	3	4	5	6
Driver		<b>680</b>			--	--
	1	2	3	4	5	6

## Product Specifications

**SAMPLE:** Fixture **680 - A90 - 618 - 27 - 07 - 01** | Driver **910 - 680 - STD - 120 - A90 - 07**

1 - Model	2 - LED	3 - Optic	4 - CCT	5 - Lumen	6 - Finish	1 - Housing Style
<b>680</b> • Leto 8	<b>A90</b> • 93+ CRI Accuracy	<b>618</b> • 18° <b>630</b> • 30° <b>645</b> • 45° <b>660</b> • 60°	<b>25</b> • 2500K <b>27</b> • 2700K <b>30</b> • 3000K <b>35</b> • 3500K <b>40</b> • 4000K <b>65</b> • 6500K	<b>07</b> • 700 (8.2W) <b>10</b> • 1000 (11.2W) <b>15</b> • 1500 (18.2W) <b>20</b> • 2000 (24.9W) <b>30</b> • 3000 (36.8W)	<b>01</b> • White <b>02</b> • Black <b>08</b> • Silver <b>XX</b> • Custom	<b>910</b> • Remote <b>915</b> • New Construction

2 - Model	3 - Driver	Dim Level	Dim Level	4 - Voltage	5 - LED	6 - Lumen
<b>680</b> • Leto 8	<b>STD</b> • Non Dimming <b>LCS</b> • 0 - 10 Volt Protocol <b>DIM</b> • Phase* <sup>1</sup> <b>ELDOLC</b> • EldoLED 0 - 10 Volt* <sup>2</sup> <b>DALI</b> • Dali Protocol* <sup>2</sup>	N/A 1% 10% 0.1% 0.1%	<b>LUTES</b> • Hilume Ecodigital* <sup>2</sup> <b>LUT2W</b> • 2 Wire for phase* <sup>1/2</sup> <b>DMX</b> • SENSO* <sup>2</sup> <b>EMG</b> • Emergency Driver* <sup>2/3</sup> <b>CSMB</b> • Casambi Wireless Control* <sup>2/3</sup>	1% 1%    	<b>120</b> • 120V <b>277</b> • 277V <b>347</b> • 347V* <sup>4</sup>	Same as Fixture  Same as Fixture

\*1 120V only

\*2 Requires remote housing

\*3 Specified separately

\*4 Not available with ELDO, Lutron or DMX

Project : \_\_\_\_\_  
 Quantity : \_\_\_\_\_  
 Type : \_\_\_\_\_  
 Notes : \_\_\_\_\_  
 \_\_\_\_\_



### Photometrics

Senso's in-house photometric testing ensures that our lighting design can match your needs precisely. Our Goniophotometer and testing lab produces on-demand photometry files based on any specified fixture, including LM-79 Test reports, IES Files, and CRI/CCT measurements. See [Sensolighting.com](http://Sensolighting.com) for more information.

*\*Full photometric Reports and IES files available for every configuration*

### Color Metrics

#### TM 30-15

Our clients deserve the best information possible about their lighting choices. That's why Senso has invested in the Illuminating Engineering Society (IES) TM 30-15, a new system that measures an LED light source's color rendering properties. Using Senso's state-of-the-art goniophotometer, this method identifies the optimal light source for your project and helps evaluate the trade-offs between efficacy and color rendering. Senso can provide TM 30-15 data for all of our products.

*\*Full Color Metric Info Available at [Sensolighting.com](http://Sensolighting.com)*

### LED Module Performance

**Output:** Up to 88 lumen/Watt

**Efficacy:** Color consistency within a 3-MacAdam Ellipse

**CCT:** 2500K - 6500K

**Color Rendering:** 93+ CRI

**Min. R Values:** R<sup>a</sup> - 60 R<sup>f</sup> - 90 R<sup>g</sup> - 100

### Driver and Power Consumption

**Dimming:** 1% dimming standard with 0.1% option  
Casambi wireless control available

**Ripple:** Industry leading Low ripple

**Efficiency:** Power Factor >0.9

Efficiency over 85%

Class 2 output for safety

**Installation:** Remote mounted

Lumen Option	700lm	1000lm	1500lm	2000lm	3000lm
Fixture Wattage	8.2W	11.2W	18.2W	24.9W	36.8
Delivered Lumen	722lm	982lm	1527lm	1923lm	2863lm

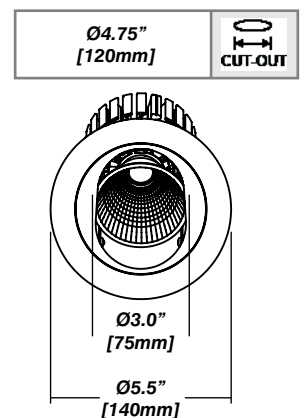
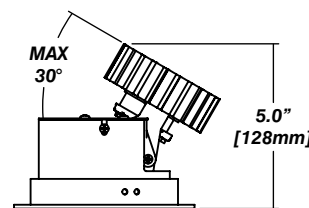
### Installation

- For new and retrofit installations
- Holds in place with three friction fit spring clips
- Simple connection between fixture and driver via quick connect
- 0° to 30° adjustable tilt angle with 360° rotation

### Construction / Finish

- Custom finishes are available
- Die cast aluminum trim
- Rated for damp location
- Made in Canada

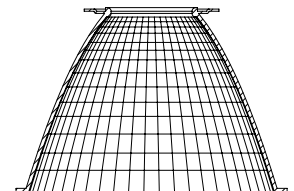
### Dimensions



### Reflector

#### Faceted Reflector

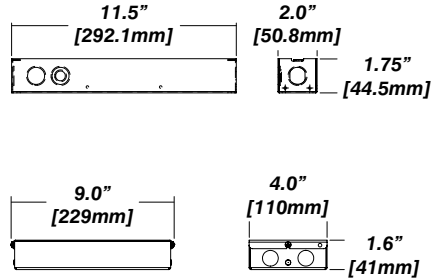
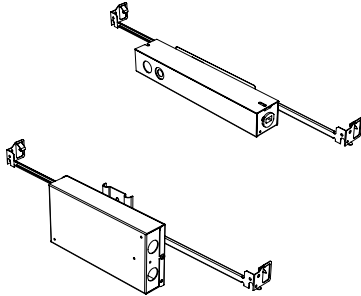
Senso metal spun reflectors for function, low glare and efficiency



## Housing Options

### Standard Senso Housing - 910

#### Dimension



#### Included

Unless specified otherwise, this is provided as standard

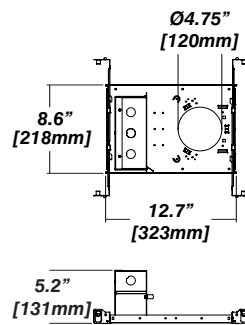
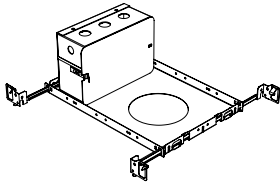
- Bar hanger** • Length: from 14-3/16" to 26"
- Driver with enclosure** • Galvanized steel enclosure
- Security wire** • Flexible aircraft cable, 12" long
- Easy to clip snap body included

\* driver can be installed either:

(A) laying on top of ceiling. (B) mounted to the bar hanger and fixed to the ceiling. (C) remote from the fixture, with the bar hanger still used if desired to secure the fixture

### New Construction - 915

#### Dimension



#### Included

- Plaster Frame** • Galvanized steel construction with cut-out to
- Bar hanger** • Length: from 14-3/16" to 26"
- Security wire** • Flexible aircraft cable, 12" long
- Easy to clip snap body included