

Features

The SLW20 Channel is a surface-mount anodized aluminum extrusion that can accommodate a wider range of LED strips. SLW20 can be mounted with mounting brackets or adhesive directly onto the desired surface. The extrusion profile comes with frosted or clear diffuser. End caps and mounting brackets sold separately. Extrusion is field cuttable.

Finish
Silver anodized

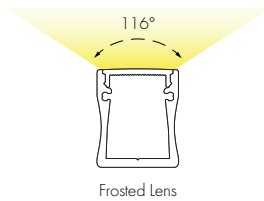
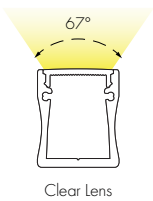
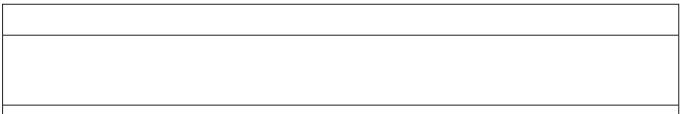
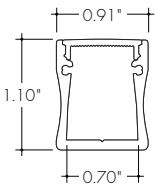
Diffuser Lens
Polycarbonate, snap-in-place, UV resistant

Mounting
Mounting bracket ordered separately

Warranty
7 Years

Declare.

Product Dimensions



	Lens Options
Actual Length	-39.40"
	-78.75"
	-118.19"
Available Lenses	- Clear
	- Frosted

TRANSMISSION PERCENTAGE (COMPARED TO LED TAPE WITHOUT CHANNEL)	
LENS	TRANSMISSION %
Clear Lens	50%
Frosted Lens	34%

See LED tape spec sheet for lens dotting characteristics & compatibility
Use complete Dotting Chart Tool online for more dotting information ([Link](#))

Ordering code

MODEL	LENGTH	LENS	FINISH
SLW20 - SLW20 Channel	39 - 39" 78 - 78" 118 - 118" ¹	C - Clear F - Frosted	SA - Silver Anodized

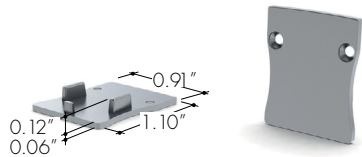
1 - For Channels and Lenses over 96", incremental shipping charges will apply.

Accessories

All accessories sold separately.

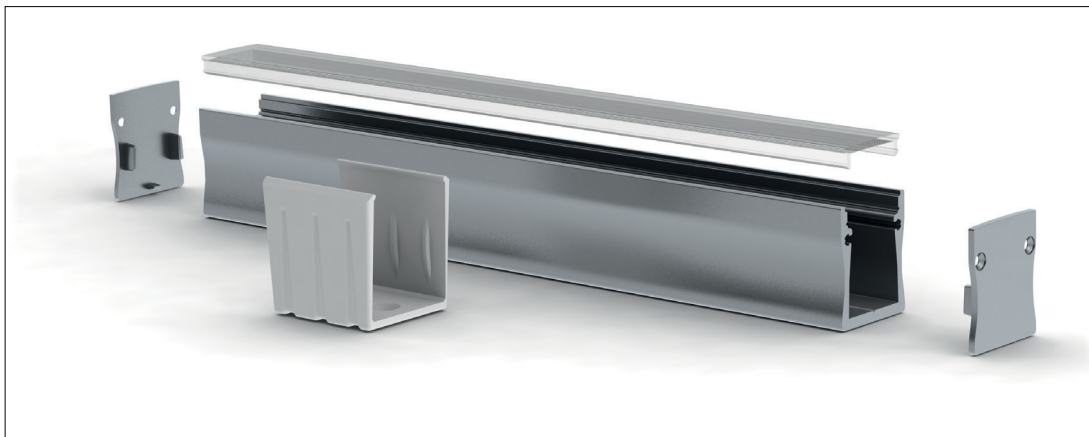
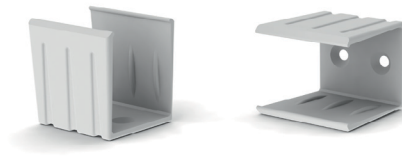
EC-SLW20-H1-SA

Endcaps, silver anodized finish



MC-SLW20

Mounting bracket, gray finish



SLW20 assembly

