

Features



The SLW36 Channel is a linear aluminum extrusion that has been designed to fit many high output LED lighting needs. The wide profile design can accommodate larger LED strips making the SLW36 extrusion ideal for bright general lighting applications. Substantial aluminum mass in profile provides excellent heat sink and physical protection for high power LEDs. Extrusion and lens are field-cuttable.

Finish

Silver anodized

Warranty

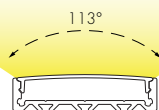
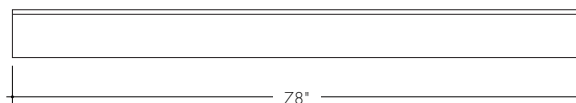
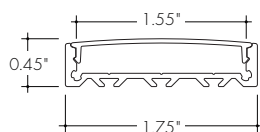
7 Years

Diffuser Lens

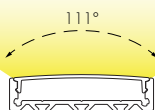
Polycarbonate, snap-in-place, UV resistant

Declare.

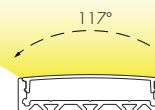
Product Dimensions



Clear Lens



Half Frosted Lens



Frosted Lens

	Lens Options
Actual Length	- 78"
Available Lenses	- Clear - Half Frosted - Frosted

TRANSMISSION PERCENTAGE (COMPARED TO LED TAPE WITHOUT CHANNEL)

LENS	TRANSMISSION %
Clear Lens	86%
Half Frosted Lens	72%
Frosted Lens	62%

See LED tape spec sheet for lens dotting characteristics & compatibility
Use complete Dotting Chart Tool online for more dotting information ([Link](#))

Ordering code

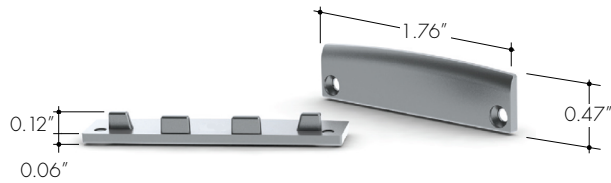
MODEL	LENGTH	LENS	FINISH
SLW36 - SLW36 Channel ¹	78 - 78"	C - Clear HF - Half Frosted F - Frosted	SA - Silver Anodized

Accessories

All accessories sold separately.

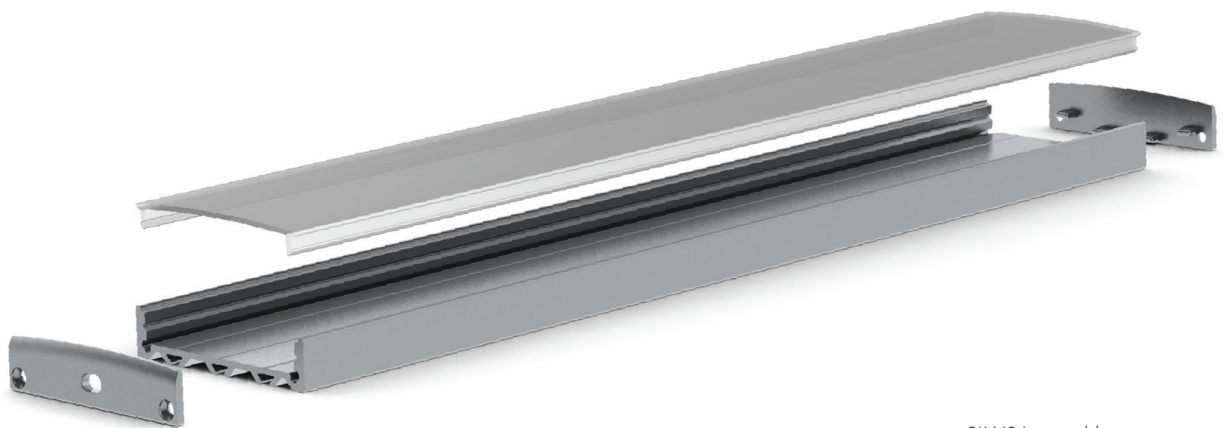
EC-SLW36-H1

End Cap



EC-SLW36-H2

End Cap with Powerfeed Opening



SLW36 assembly