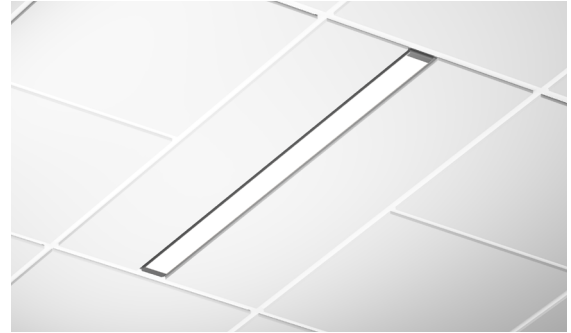


Features

- Full length seamless lenses range from 2 to 12 feet.
- Trimless design meant to blend directly into the environment
- Not limited to straight runs, available in L nodes, providing freedom to create seamless configurations, available in 22.5in increments.
- Integrated drivers and controls make this fixture easy to install and widely applicable
- The Vesta Recessed line features a powerful light in a clean, recessed format while not sacrificing the symmetrical, high-performance frosted lens which illuminates the surface evenly with no shadows or dark spots.
- Five Year Warranty.



Finish Options

☐ White ☒ Black ☐ Silver

RoHS



 Made in Canada
with Imported Parts

Technical Information

OUTPUT OPTIONS	TW04	TW06	TW08
Lumen Output	418 lm/ft	592 lm/ft	776 lm/ft
Average Power Consumption	2.5 W/ft	3.5 W/ft	4.8 W/ft
Efficacy	20 lm/W	21 lm/W	21 lm/W

CCT	CRI	TM-30		
		R _f	R _g	R ₉
2700K	91	90	96	59
6500K	93	87	97	73

Ordering Code

Integral Driver Example: Fixture VSD-L-6ft-TW04-27K65K-F-AF5-WH-010S-CSMB

Fixture

MODEL	LENGTH	OUTPUT DOWN ²	CCT	LENS DOWN
VSD-L - Vesta Dry, Recessed Trimless	4ft - 4 feet 6ft - 6 feet 8ft - 8 feet 10ft - 10 feet 12ft - 12 feet XX - System ⁶	TW04 - 418 lm/ft (4.8 W/ft) ¹ TW06 - 592 lm/ft (7.2 W/ft) TW08 - 776 lm/ft (9.6 W/ft)	27K65K - Tunable White, 2700K-6500K	F - Frosted Lens

MOUNTING	FINISH	DRIVER	DRIVER OPTIONS
GS - Gypsum Surface Mounting Bracket AF5 - AC + Feed Cable, 5ft long ³ AF8 - AC + Feed Cable, 8ft long ³ AF10 - AC + Feed Cable, 10ft long ³	WH - White BK - Black SL - Silver	010S - 0-10V, 1% Dimming, 120/277V DALI - E1DALI, DALI protocol 2, DT-6, Log, 0.1% Dimming, 120/277V (Standard as LOG) ⁷ DMX - E1DALI, DMX, 0.1% Dimming, 120V/277V	NA - None CSMB - Casambi ⁵ AWNDR - Athena ⁴ MNOD - PIR Motion Sensor, Occupancy, Daylight Harvesting ⁵

1 - TW04 Output is not available with 4ft length.

2 - Tunable White output numbers are at representative of 4000K

3 - CSMB with 010S/DALI drivers only.

4 - AWNR contact manufacture for build assistance - (MOD Only).

5 - MNOD contact manufacturer for build assistance - (MOD Only).

6 - Customizable configurations available, contact factory (MOD only).

7 - DALI driver options use logarithmic dimming curve as standard. For LINEAR dimming curve, add 'LIN' after the dimming code, i.e. DALILIN

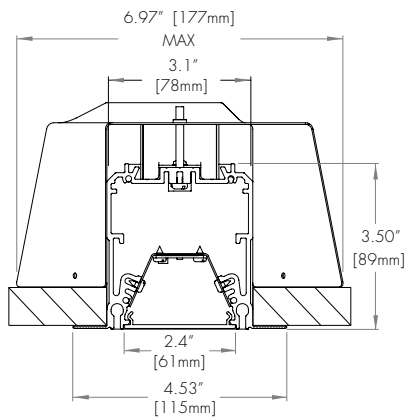
8 - Suspension option is for non-load-bearing ceiling (suspended ceiling).

CONTACT FACTORY FOR MORE OPTIONS.

Mounting

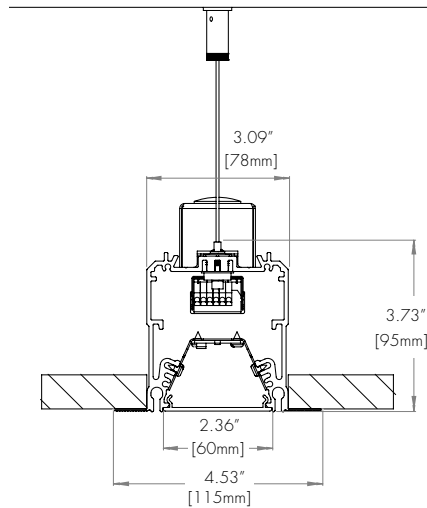
GS

Gypsum Surface Mount Bracket



AF5/ AF8/ AF10

Trimless Recessed Aircraft Cable Mount



Lens

F

Frosted Lens



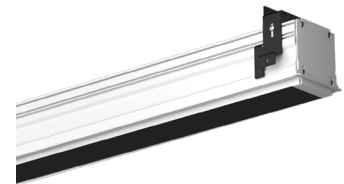
AS

Asymmetric Lens

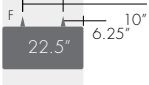



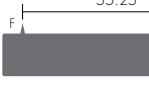



BL

Black Lens



Cut Lengths

CODE	FIXTURE LENGTH *1	Feet	2	4	6	8	10	12
A	22.5"							
B (4)	44.5"							
C (6)	66.5"							
D (8)	88.5"							
E (10)	110.5"							
F (12)	132.5"							

Legend

M : Mounting Point
F : Feed Point

Same for both ends for all configurations except A

L node dimensions

*1 Not including end-caps. End-caps are an additional 5/32"

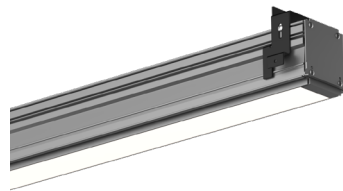
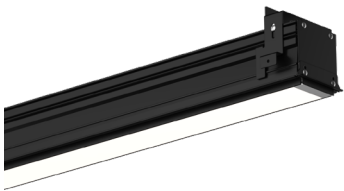
*2 For custom lengths please customer service. Cover plates will be added to each end to avoid dark spaces on lense.

Standard Finish

BK
Black

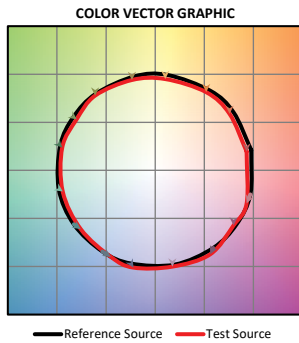
WH
White

SL
Silver

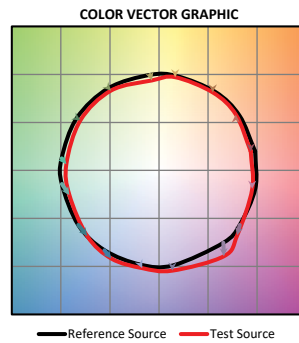


TM-30

Tunable White 2700K



Tunable White 6500K



Photometry

Tunable White Down

