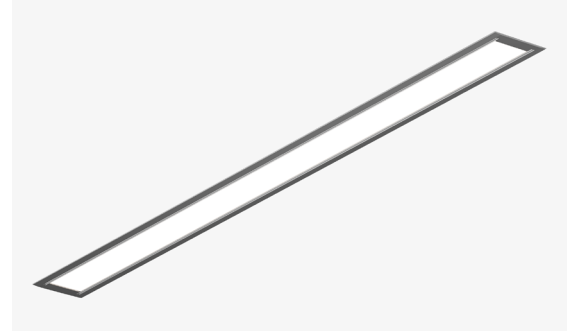


## Features

- Full length seamless lenses range from 2 to 12 feet.
- Not limited to straight runs, available in L nodes, providing freedom to create seamless configurations, available in 22.5in increments.
- Integrated drivers and controls make this fixture easy to install and widely applicable.
- The Vesta Recessed line features a powerful light in a clean, recessed format while not sacrificing the symmetrical, high-performance frosted lens which illuminates the surface evenly with no shadows or dark spots.
- Five Year Warranty



## Finish Options

☐ White ☒ Black ☐ Silver

**RoHS**



 Made in Canada  
with Imported Parts

## Technical Information

OUTPUT OPTIONS	TW04	TW06	TW08
<b>Lumen Output</b>	418 lm/ft	592 lm/ft	776 lm/ft
<b>Average Power Consumption</b>	2.5 W/ft	3.5 W/ft	4.8 W/ft
<b>Efficacy</b>	20 lm/W	21 lm/W	21 lm/W

CCT	CRI	TM-30		
		R <sub>f</sub>	R <sub>g</sub>	R <sub>9</sub>
<b>2700K</b>	91	90	96	59
<b>6500K</b>	93	87	97	73

## Ordering Code

Integral Driver Example: Fixture VSD-R-6ft-TW0427K65K-F-AF5-WH-010S-CSMB

### Fixture

MODEL	LENGTH	OUTPUT DOWN <sup>2</sup>	CCT	LENS DOWN
VSD-R-Vesta Dry, Recessed	4ft-4 feet 6ft-6 feet 8ft-8 feet 10ft-10 feet 12ft-12 feet XX-System <sup>6</sup>	TW04-418 lm/ft (4.8 W/ft) <sup>1</sup> TW06-592 lm/ft (7.2 W/ft) TW08-776 lm/ft (9.6 W/ft)	27K65K-Tunable White, 2700K-6500K	F-Frosted Lens

MOUNTING	FINISH	DRIVER	DRIVER OPTIONS
GS-Gypsum Surface Mounting Bracket AF5-AC + Feed Cable, 5ft long <sup>7</sup> AF8-AC + Feed Cable, 8ft long <sup>8</sup> AF10-AC + Feed Cable, 10ft long <sup>8</sup>	WH-White BK-Black SL-Silver	010S-0-10V, 1% Dimming, 120/277V DALI-EldoLED, DALI protocol 2, DF-6, Log, 0.1% Dimming, 120/277V [Standard as LOG] DMX-EldoLED, DMX, 0.1% Dimming, 120V/277V	NA-None CSMB-Casambi <sup>3</sup> AWN-R-Athena <sup>4</sup> MNOD-PIR Motion Sensor, Occupancy, Daylight Harvesting <sup>5</sup>

1 - TW04 Output is not available with 4ft length.

2 - Tunable White output numbers are at representative of 4000K

3 - CSMB with 010S/DALI drivers only.

4 - AWNR contact manufacturer for build assistance - (MOD Only).

5 - MNOD contact manufacturer for build assistance - (MOD Only).

6 - Customizable configurations available, contact factory (MOD only).

7 - DALI driver options use logarithmic dimming curve as standard. For LINEAR dimming curve, add "LIN" after the dimming code, i.e. DALI LIN

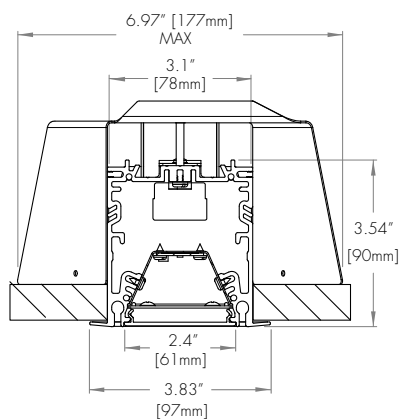
8 - Suspension option is for non-load-bearing-ceiling (suspended ceiling).

CONTACT FACTORY FOR MORE OPTIONS.

## Dimensions

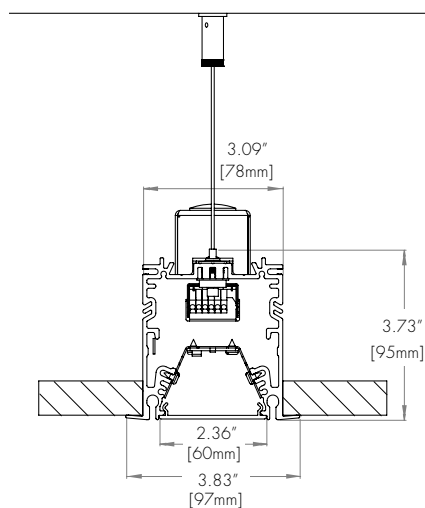
### GS

Gypsum Surface Mount Bracket



### AF5/ AF8/ AF10

Trimmed Recessed Aircraft Cable Mount



## Lens

### F

Frosted Lens



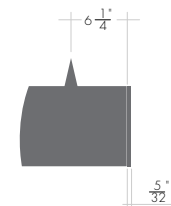
## Cut Lengths

CODE	FIXTURE LENGTH *1	Feet	2	4	6	8	10	12
A	22.5"							
B (4)	44.5"							
C (6)	66.5"							
D (8)	88.5"							
E (10)	110.5"							
F (12)	132.5"							

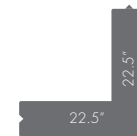
### Legend

M : Mounting Point  
F : Feed Point

Same for both ends  
for all configurations  
except A



L node dimensions

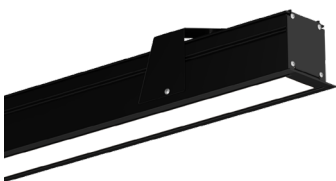


\*1 Not including end-caps. End-caps are an additional 5/32"

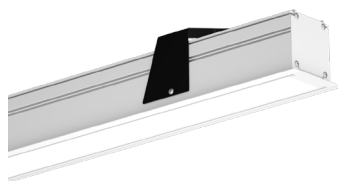
\*2 For custom lengths please customer service. Cover plates  
will be added to each end to avoid dark spaces on lense.

## Standard Finish

**BK**  
Black



**WH**  
White

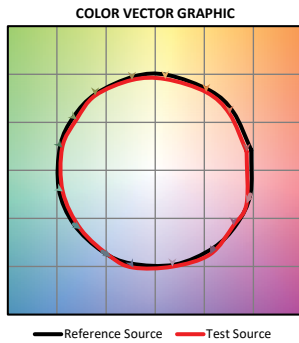


**SL**  
Silver

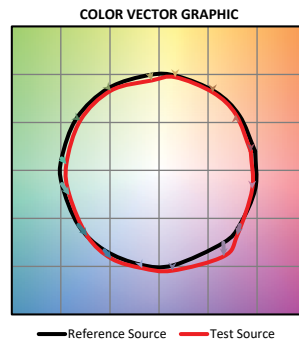


## TM-30

**Tunable White 2700K**



**Tunable White 6500K**



## Photometry

**Tunable White Down**

