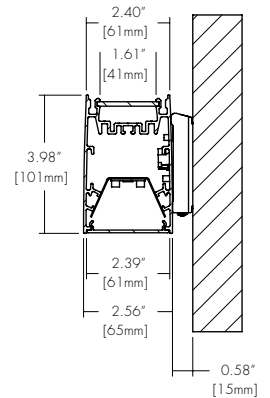
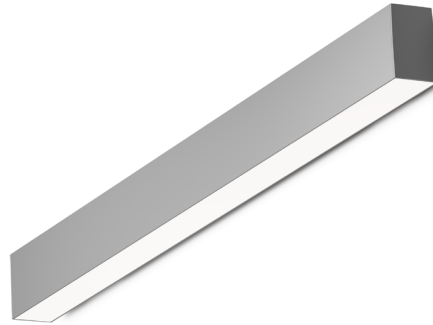


## Features

- Full length seamless lenses range from 2 to 12 feet.
- Choose either UP light or DOWN light with this architecturally, built to order LED luminaire
- Integrated drivers and controls make this fixture easy to install and widely applicable
- The subtle flared Vesta Wall Mount fixtures feature a symmetrical, high-performance frosted lens which illuminates the surface evenly with no shadows or dark spots.
- Five Year Warranty



## Finish Options

☐ White ☒ Black ☐ Silver

**RoHS**

**UL**  
LISTED

Made in Canada  
with Imported Parts

## Technical Information

OUTPUT OPTIONS		TW04	TW06	TW08
DOWN	Lumen Output	418 lm/ft	592 lm/ft	776 lm/ft
	Average Power Consumption	2.5 W/ft	3.5 W/ft	4.8 W/ft
	Efficacy	20 lm/W	21 lm/W	21 lm/W
UP	Lumen Output	418 lm/ft	592 lm/ft	776 lm/ft
	Average Power Consumption	2.5 W/ft	3.5 W/ft	4.8 W/ft
	Efficacy	20 lm/W	21 lm/W	21 lm/W

TM-30				
CCT	CRI	R <sub>f</sub>	R <sub>g</sub>	R <sub>9</sub>
2700K	91	90	96	59
6500K	93	87	97	73

## Ordering Code

Integral Driver Example: Fixture VSD-S-6FT-TW04-00-27K65K-F-N-WH-RDS-WH-AF5-CL010S-CSMB

### Fixture

MODEL	LENGTH	OUTPUT DOWN <sup>1,4</sup>	OUTPUT UP <sup>1,4</sup>	CCT	LENS DOWN <sup>2</sup>	LENS UP <sup>2</sup>	FINISH
VSD-WM - Vesta Dry, Suspended Up OR Down	4ft - 4 feet <sup>5</sup> 6ft - 6 feet 8ft - 8 feet 10ft - 10 feet 12ft - 12 feet XX - System <sup>9</sup>	TW04 - 418 lm/ft (4.8 W/ft) <sup>5</sup> TW06 - 592 lm/ft (7.2 W/ft) TW08 - 776 lm/ft (9.6 W/ft) 00 - No Downlight	TW04 - 418 lm/ft (4.8 W/ft) TW06 - 592 lm/ft (7.2 W/ft) TW08 - 776 lm/ft (9.6 W/ft) 00 - No Uplight	27K65K - Tunable White, 2700K-6500K	F - Frosted Lens N - No Lens <sup>3</sup>	F - Frosted Lens N - No Lens	Standard WH - White BK - Black SL - Silver

### DRIVER

### DRIVER OPTIONS

010S - 0-10V, 1% Dimming, 120/277V  
DALI - EldoLED, DALI protocol 2, DT-6, Log, 0.1% Dimming, 120/277V (Standard as LOG)<sup>10</sup>  
DMX - EldoLED, DMX, 0.1% Dimming, 120V/277V

NA - None  
CSMB - Casambi<sup>6</sup>  
AWNIR - Athena<sup>7</sup>  
MNOD - PIR Motion Sensor, Occupancy, Daylight Harvesting<sup>8</sup>

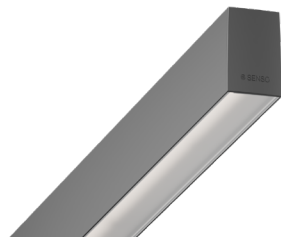
1 - Select only Down or Up output. Other must be 00.  
2 - Select only Down or Up Lens. Other must be N.  
3 - When Down Lens is N it will receive Filler plate.  
4 - Tunable White output numbers are at representative of 4000K.  
5 - TW04 Output is not available with 4ft length.

6 - CSMB with 010S/DALI drivers only.  
7 - AWNR contact manufacturer for build assistance - (MOD Only).  
8 - MNOD contact manufacturer for build assistance - (MOD Only).  
9 - Customizable configurations available, contact factory (MOD only).  
10 - DALI driver options use logarithmic dimming curve as standard. For LINEAR dimming curve, add "LIN" after the dimming code, i.e. DALILIN

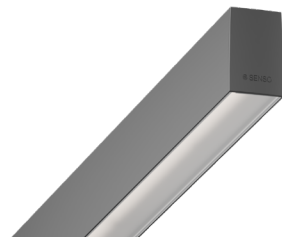
CONTACT FACTORY FOR MORE OPTIONS.

## Lens Down

**F**  
Frosted Lens



**AS**  
Asymmetric Lens

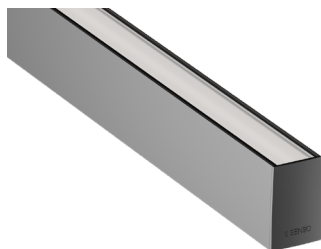


**BL**  
Black Lens

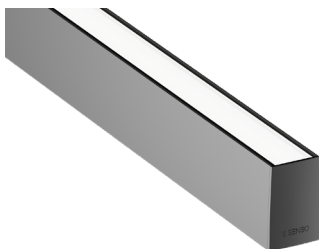


## Lens Up

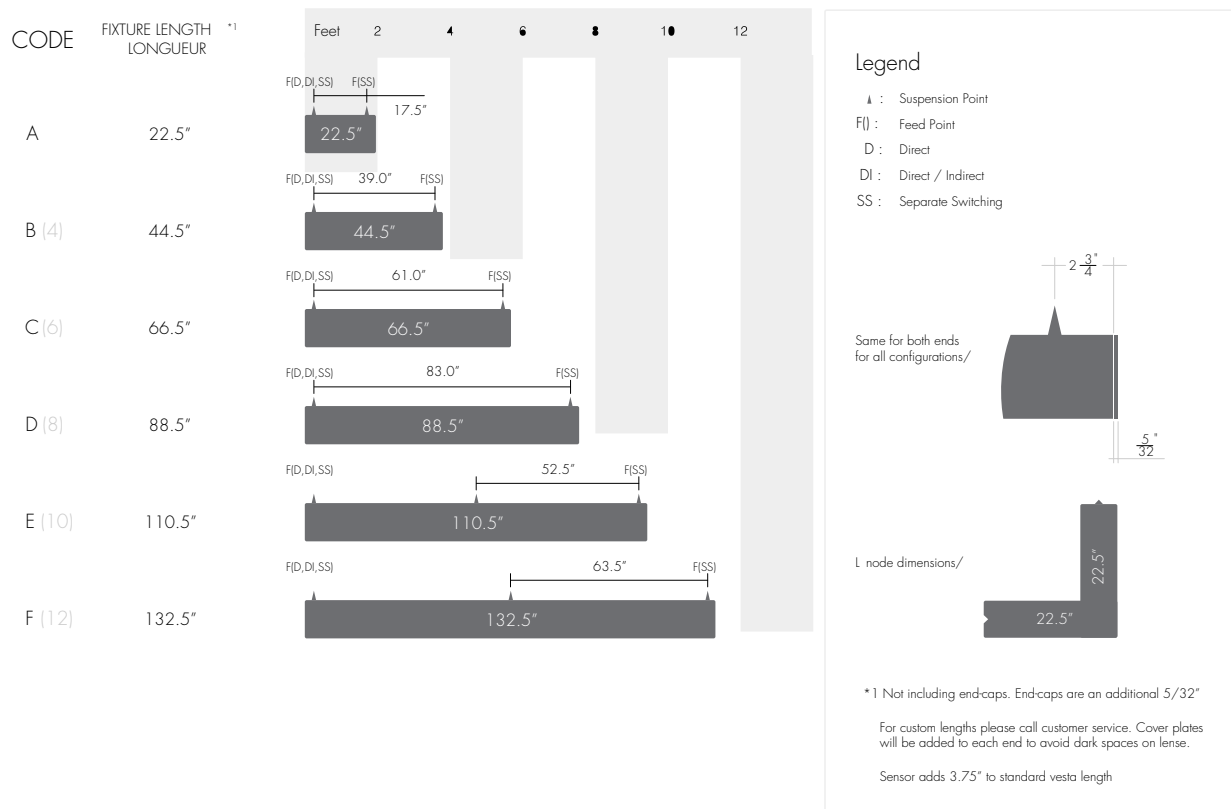
**F**  
Frosted Lens



**AS**  
Asymmetric Lens



## Cut Lengths

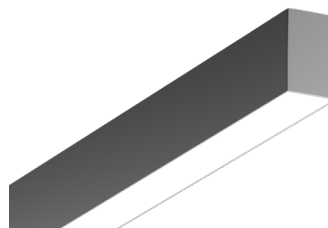
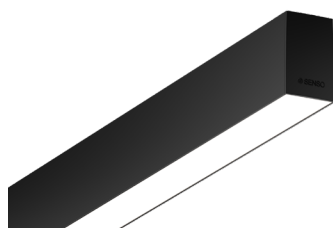


## Standard Finish

**BK**  
Black

**WH**  
White

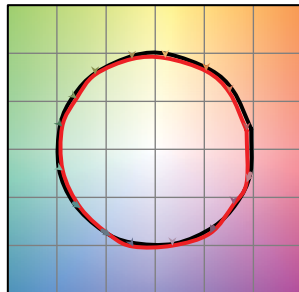
**SL**  
Silver



## TM-30

**Tunable White 2700K**

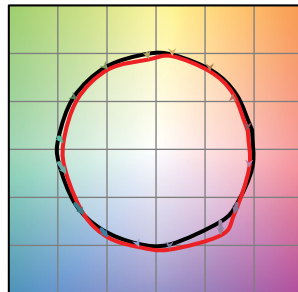
COLOR VECTOR GRAPHIC



— Reference Source — Test Source

**Tunable White 6500K**

COLOR VECTOR GRAPHIC



— Reference Source — Test Source

## Photometry

**Tunable White Down**

